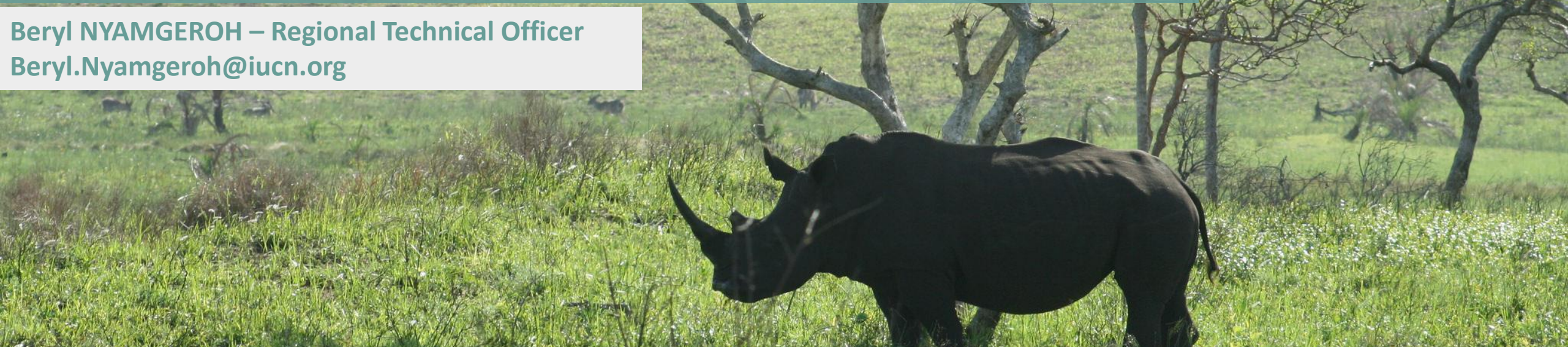


BIOPAMA EASTERN AND SOUTHERN AFRICA

The BIOPAMA Regional Resource Hub (RRH)

Beryl NYAMGEROH – Regional Technical Officer
Beryl.Nyamgeroh@iucn.org



An initiative of the Organisation of African, Caribbean and Pacific States financed by the European Union's 11th EDF.



From Knowledge to Action for a Protected Planet

Table of Content

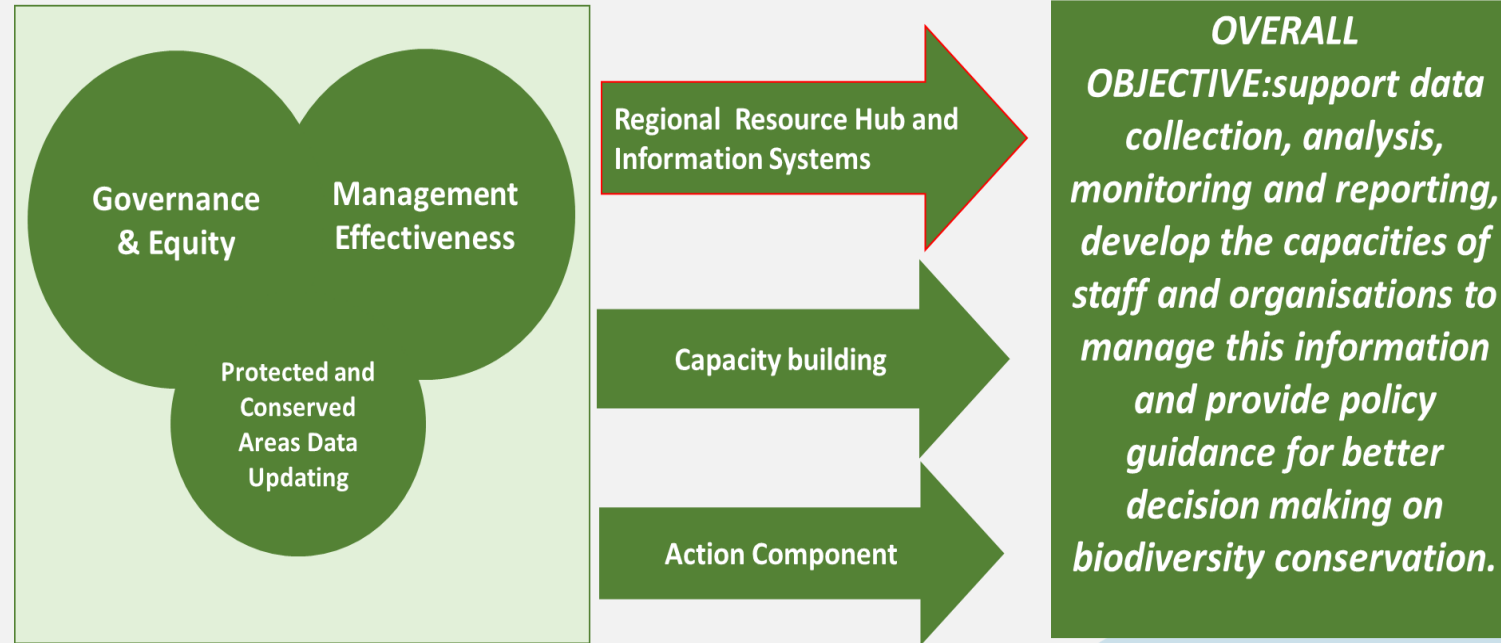
- BIOPAMA
- RRH
- SADC TFCA PORTAL
- TEAMs



BIODIVERSITY AND PROTECTED AREA MANAGEMENT PROGRAMME (BIOPAMA) 2017 - 2023

BIOPAMA

- **Initiative** of the Organisation of the Africa, Caribbean and Pacific (OACP) states
- **Financed** by the European Union's 11th European Development Fund
- **Implemented jointly**
 - International Union for Conservation of Nature (IUCN)
 - Joint Research Centre (JRC) of the European commission.
 - Regional Centre for Mapping of Resources for development (RCMRD)



Regional Resource Hub (RRH)



WHAT IS THE REGIONAL RESOURCE HUB

FUNCTION

- I. A **platform to facilitate exchange** of data/information among decision makers and managers of protected areas
- II. It supports **regional priorities for decision support products**. One such product is a regional “State of Protected and conserved Areas”

SERVICES

- I. Provide **customized products and services** to meet unique needs of the RECs and national agencies to be developed in close liaison with the respective agencies and RRH Host Institution
- II. Aims to **transform data** into actionable information that can be used for decision making

The SADC Trans frontier Conservation Areas (TFCA) portal



The SADC TFCA portal was migrated to the RRH for hosting in February 2020

RATIONALE

- i. The SADC TFCA focus mirrors what we are trying to do with the RRH
 - a. working across borders and working between agencies,
 - b. Sharing data and
 - c. making decisions across broader landscapes and areas
- ii. Not duplicating what is already existing

COMPLEMENTARITY

- i. Linking the data to targets
- ii. Using data to measure and drive progress in a positive way - lead to better outcomes through better decisions.
- iii. Focus on putting the right information and the right questions into the systems

TEAMs - Torchbearer, Enthusiastic, Available and Motivated



Sharing knowledge and best practices leads to stronger institutions and effective policies and decisions



- Pilot group to give feed back and provide advice on the development and improvement on functionality and usefulness of the Regional Resource Hub

THANK YOU

Twitter: **#BIOPAMA**

Website: www.biopama.org

<https://esahub.rcmrd.org/en/>

<http://biopama-rris.rcmrd.org/>

<https://biopama.org/node/377>

<https://www.yammer.com/biopama/>

BIOPAMA

From Knowledge to Action for a Protected Planet



www.biopama.org

The Biodiversity and Protected Areas Management Programme (BIOPAMA) is an initiative of the Organisation of African, Caribbean and Pacific States financed by the European Union's 11th EDF.