



PEACE PARKS
FOUNDATION
RESTORING TOMORROW

**Reconnecting Africa's wild spaces to create
a future for man in harmony with nature**



Where we work

ESTABLISHED TFCAs

- 1 /Ai/Ais-Richtersveld TP* (Namibia/South Africa)
- 2 Kgalagadi TP* (Botswana/South Africa)
- 3 Kavango Zambezi (KAZA) TFCA* (Angola/Botswana/Namibia/Zambia/Zimbabwe)
- 4 Great Limpopo TP and TFCA* (Mozambique/South Africa/Zimbabwe)
- 5 Lubombo TFCRA* (Mozambique/South Africa/The Kingdom of eSwatini)
- 6 Malawi-Zambia TFCA* (Malawi/Zambia)
- 7 Maloti-Drakensberg TFCDA* (Lesotho/South Africa)

EMERGING TFCAs

- 8 Greater Mapungubwe TFCA* (Botswana/South Africa/Zimbabwe)

CONCEPTUAL TFCAs

- 9 Liuwa Plains-Mussuma TFCA* (Angola/Zambia)
- 10 Lower Zambezi-Mana Pools TFCA* (Zambia/Zimbabwe)





How we work



COMMITMENT

- Land secured
- Government support
- Investment into TFCA



CONSERVATION AT SCALE

- Biodiversity
- Ecosystem functionality
- Habitat integrity



COMMUNITY DEVELOPMENT

- Growth in local economy
- Improved socio-economic conditions
- Security / resilience
- Social cohesion



COMMERCIAL DEVELOPMENT

- Investment mobilised
- Wildlife economy
- Tourism growth



RESTORE



PROTECT



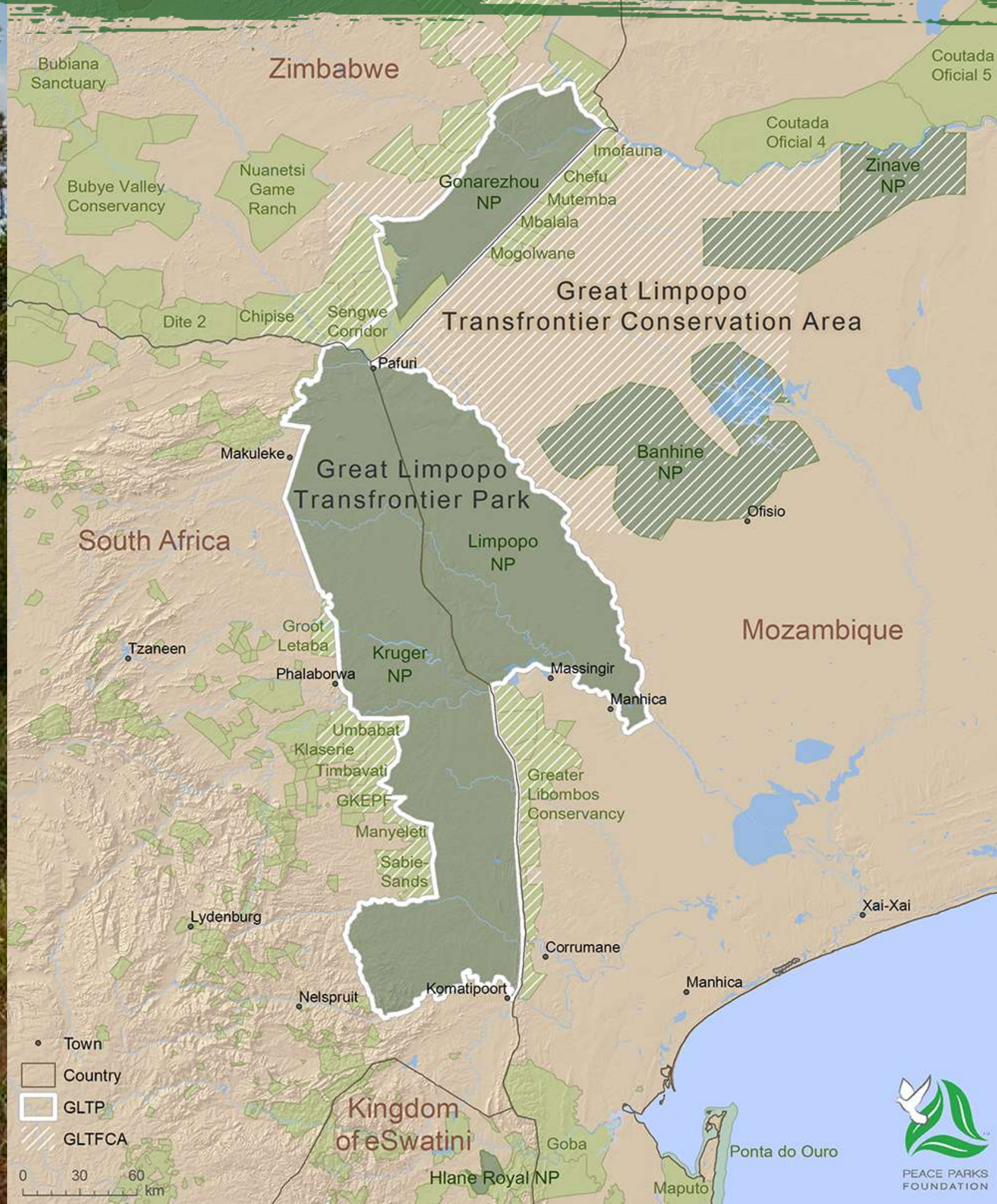
GOVERN



FUND



Restoration and Protection in Mozambique

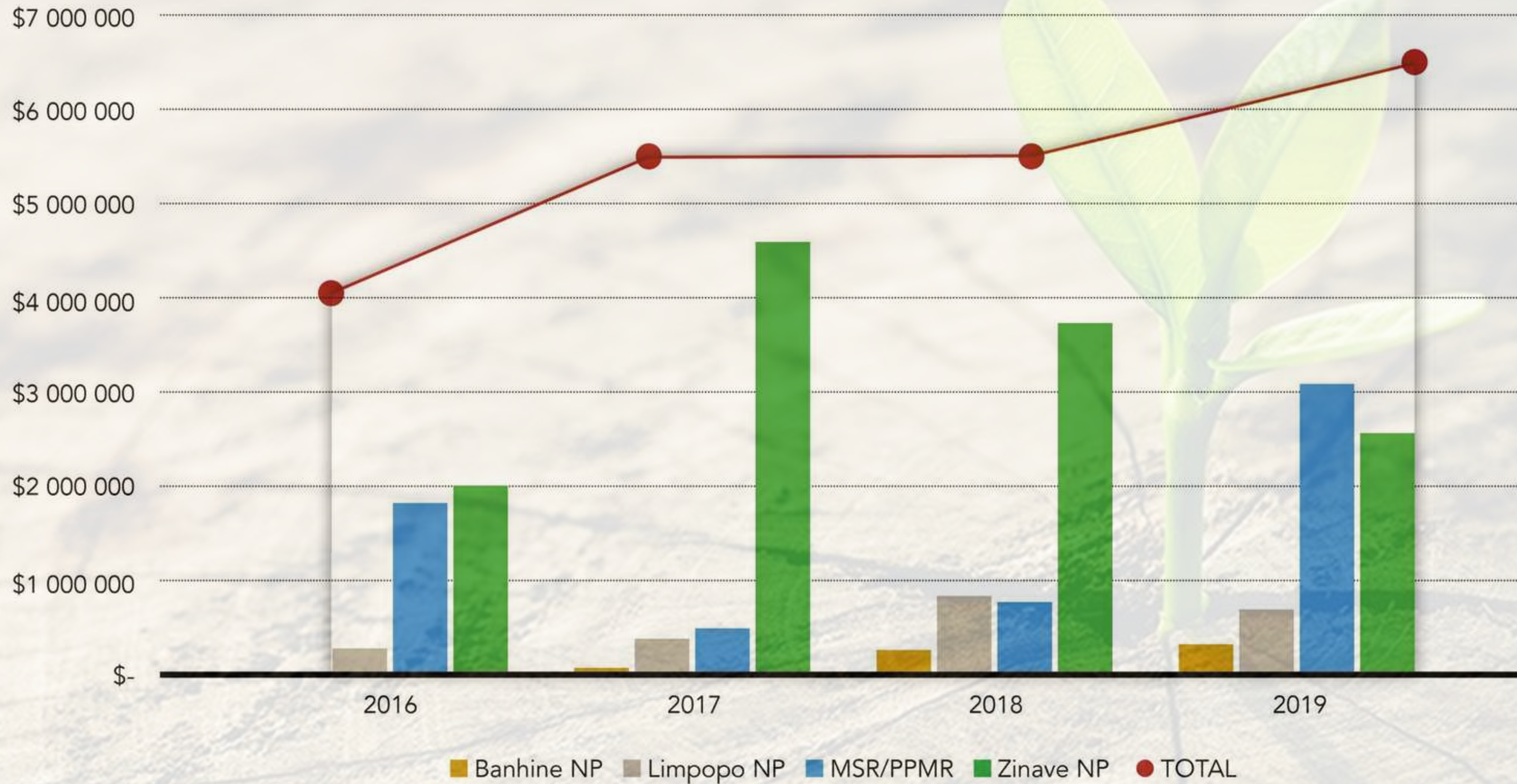


FUND

Support to Mozambique



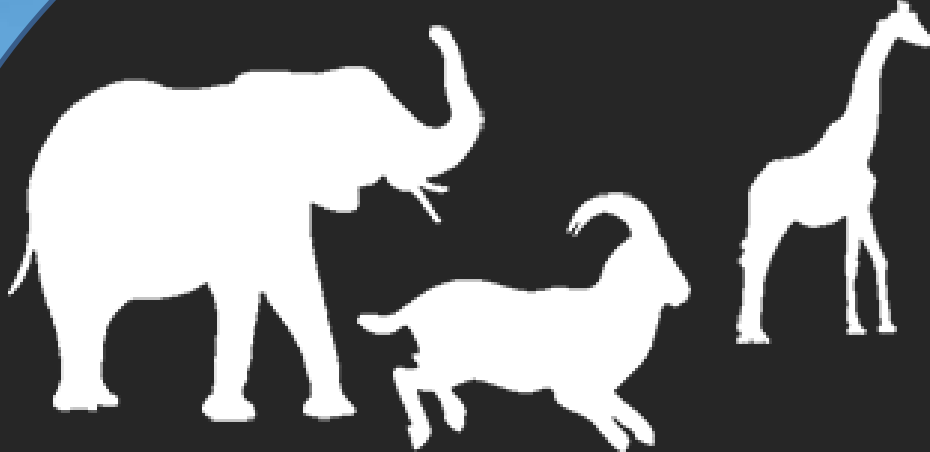
FINANCIAL INVESTMENT



RESTORE

Rewilding Mozambique

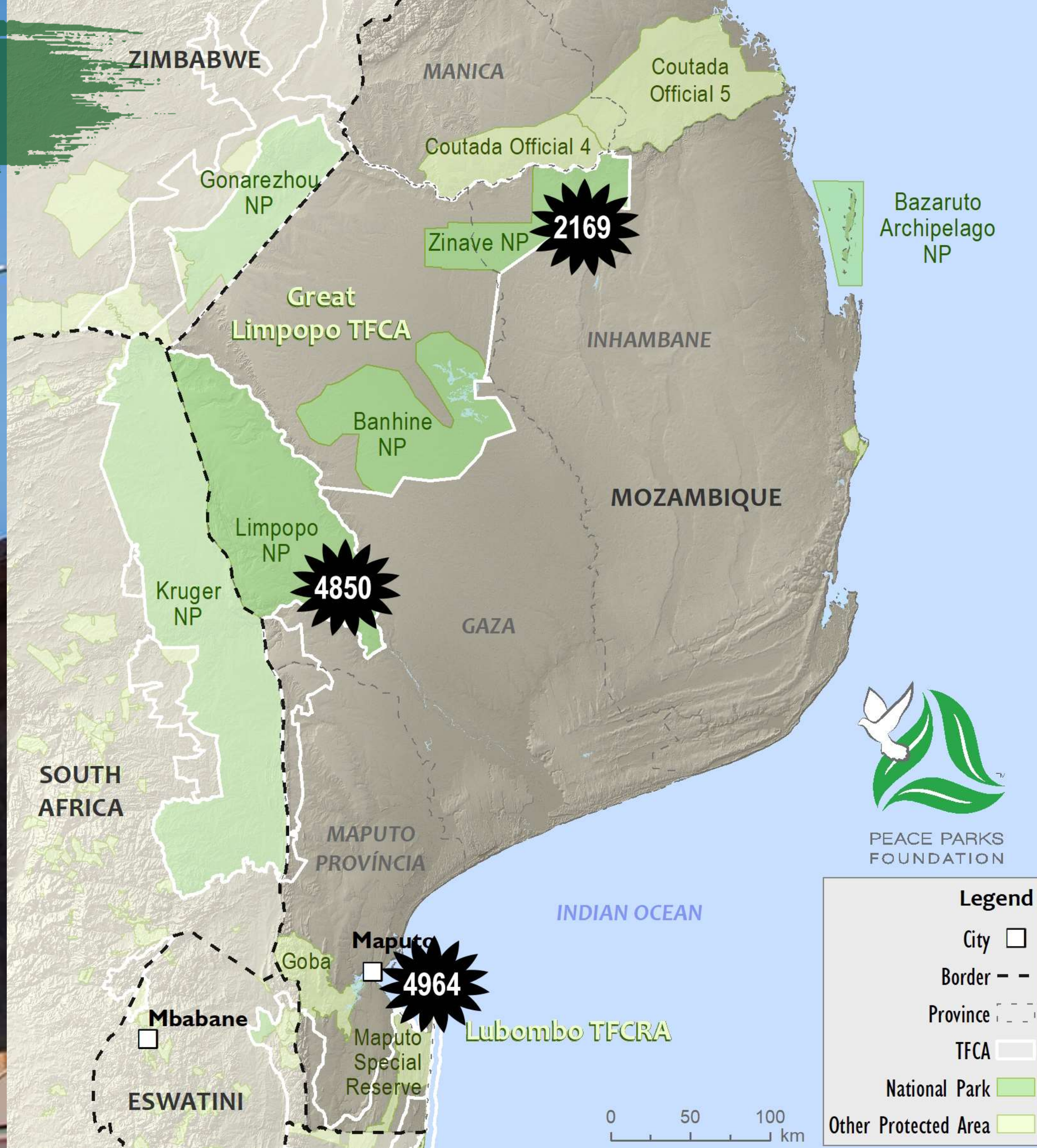



12 000 animals
translocated
since 2001



RESTORE

Rewilding Mozambique



PEACE PARKS FOUNDATION

Legend

- City
- Border - -
- Province
- TFCAs
- National Park
- Other Protected Area



RESTORE

Rewilding Mozambique – reversing extinction



RESTORE

Thriving ecosystems



30.24 inHg ↑ 25C 08/10/2019 07:20AM ZINAVE1



30.09 inHg ↓ 14C 08/11/2019 06:48AM ZINAVE1



30.12 inHg - 27C 08/11/2019 08:44AM ZINAVE1



29.91 inHg ↓ 33C 08/12/2019 12:56PM ZINAVE1

RESTORE

The next step: large carnivores



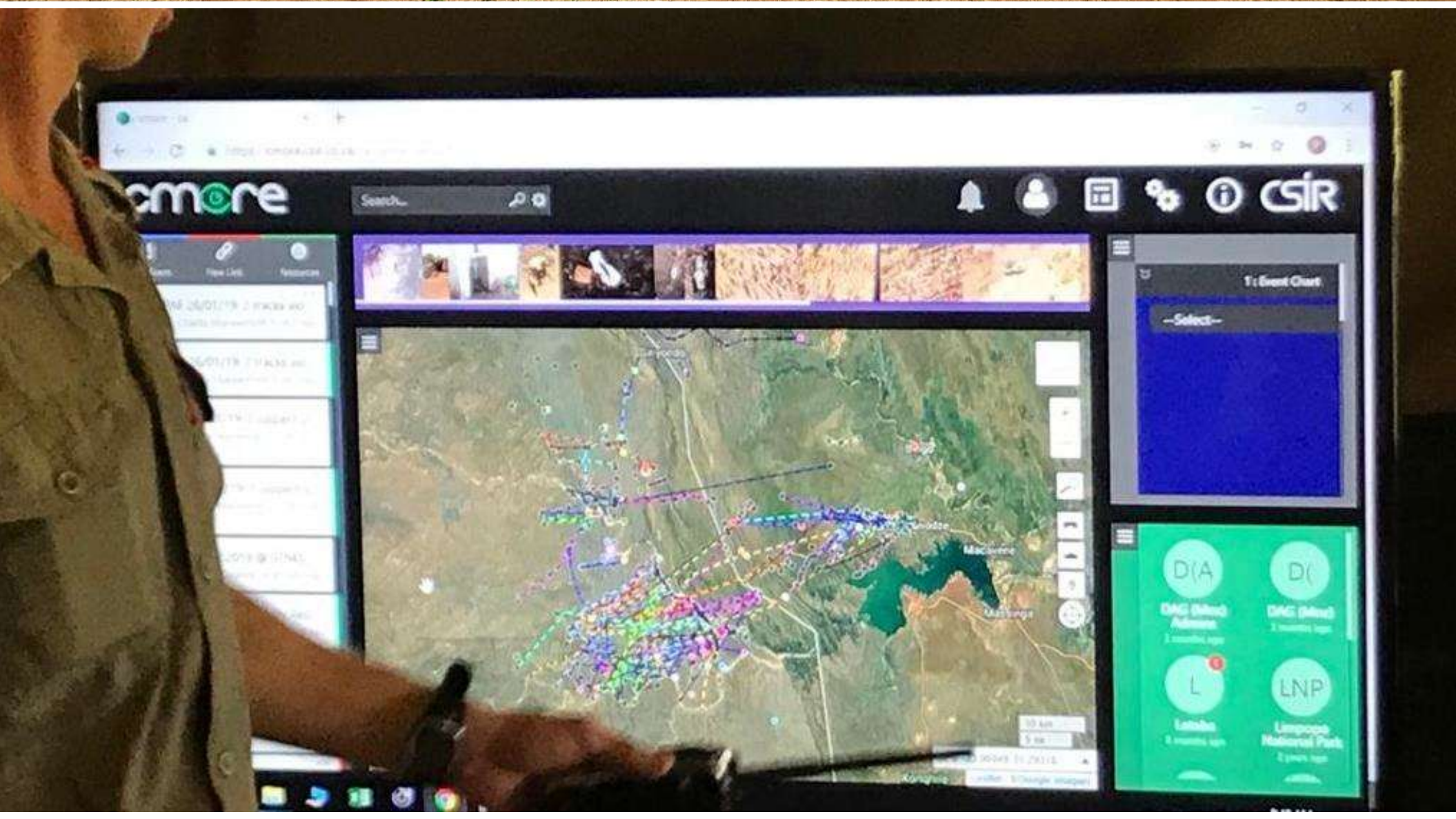
PROTECT

Nature under threat



PROTECT

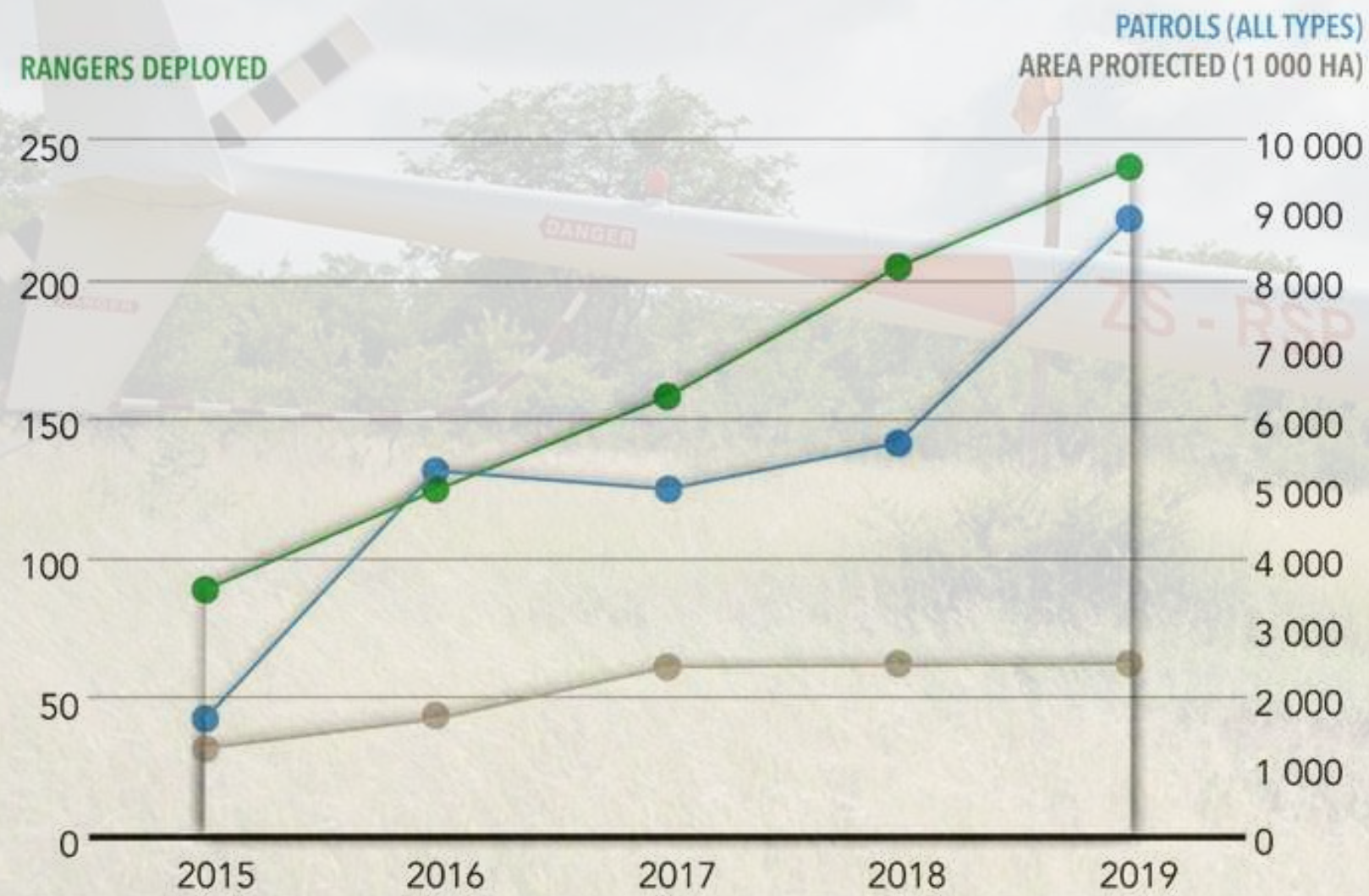
Protecting Mozambique



Protecting Mozambique

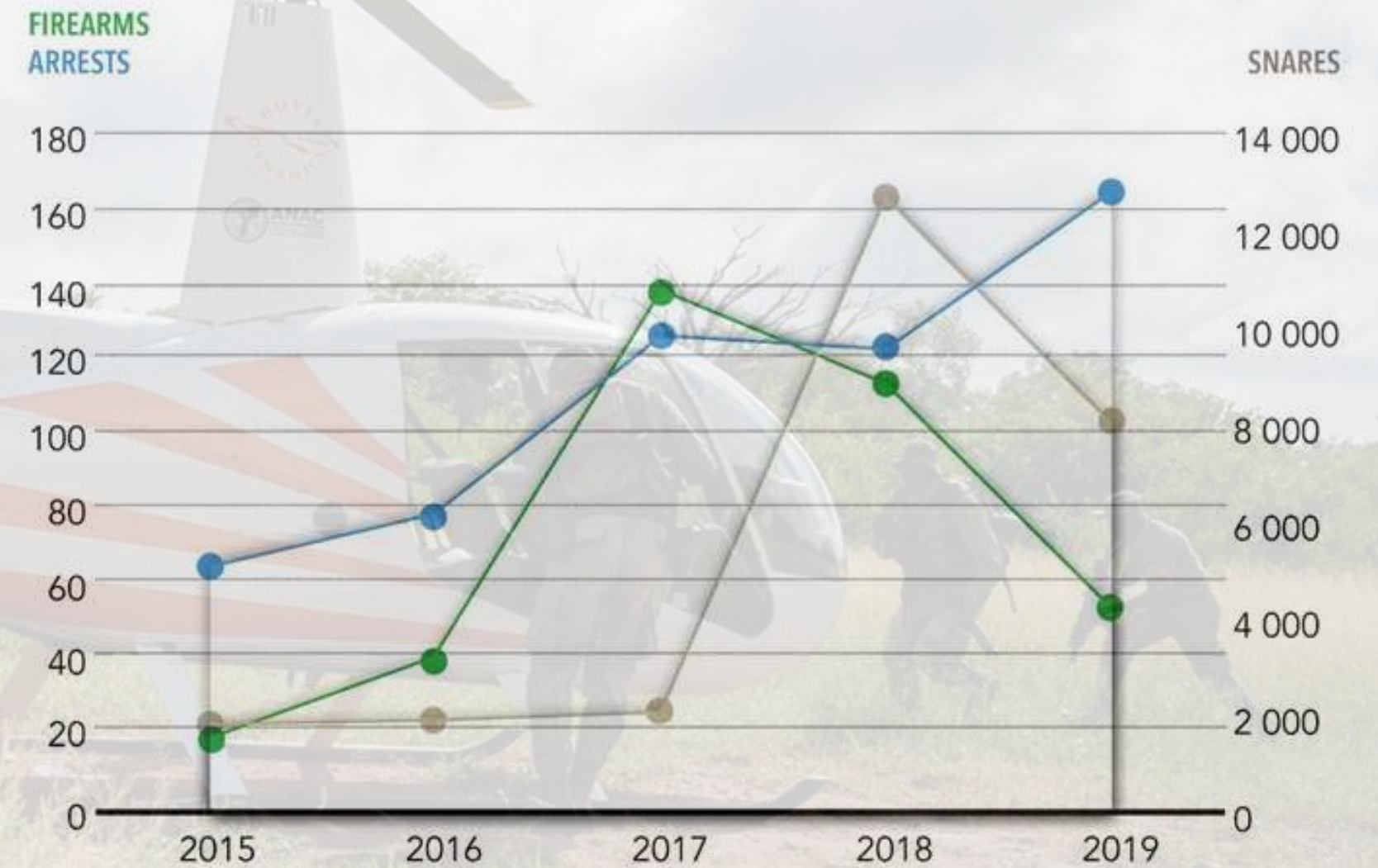


MOZAMBIQUE PROTECTED AREA - INPUT



# RANGERS DEPLOYED	88	121	157	201	237
# PATROLS (ALL TYPES)	1 689	5 160	5 039	5 563	8 777
# AREA PROTECTED (1 000 HA)	1 250	1 650	2 375	2 375	2 375

MOZAMBIQUE PROTECTED AREA - OUTPUT



# FIREARMS ARRESTS	18	39	137	112	54
# ARRESTS	65	77	125	121	163
# SNARES	1 638	1 735	1 932	12 467	7 944

PROTECT

Protecting Mozambique



MOZAMBIQUE ANTI-POACHING EFFORTS



237

RANGERS
DEPLOYED



8 777

PATROLS
UNDERTAKEN



54

FIREARMS
CONFISCATED



92

GIN TRAPS
REMOVED



7 944

SNARES
REMOVED



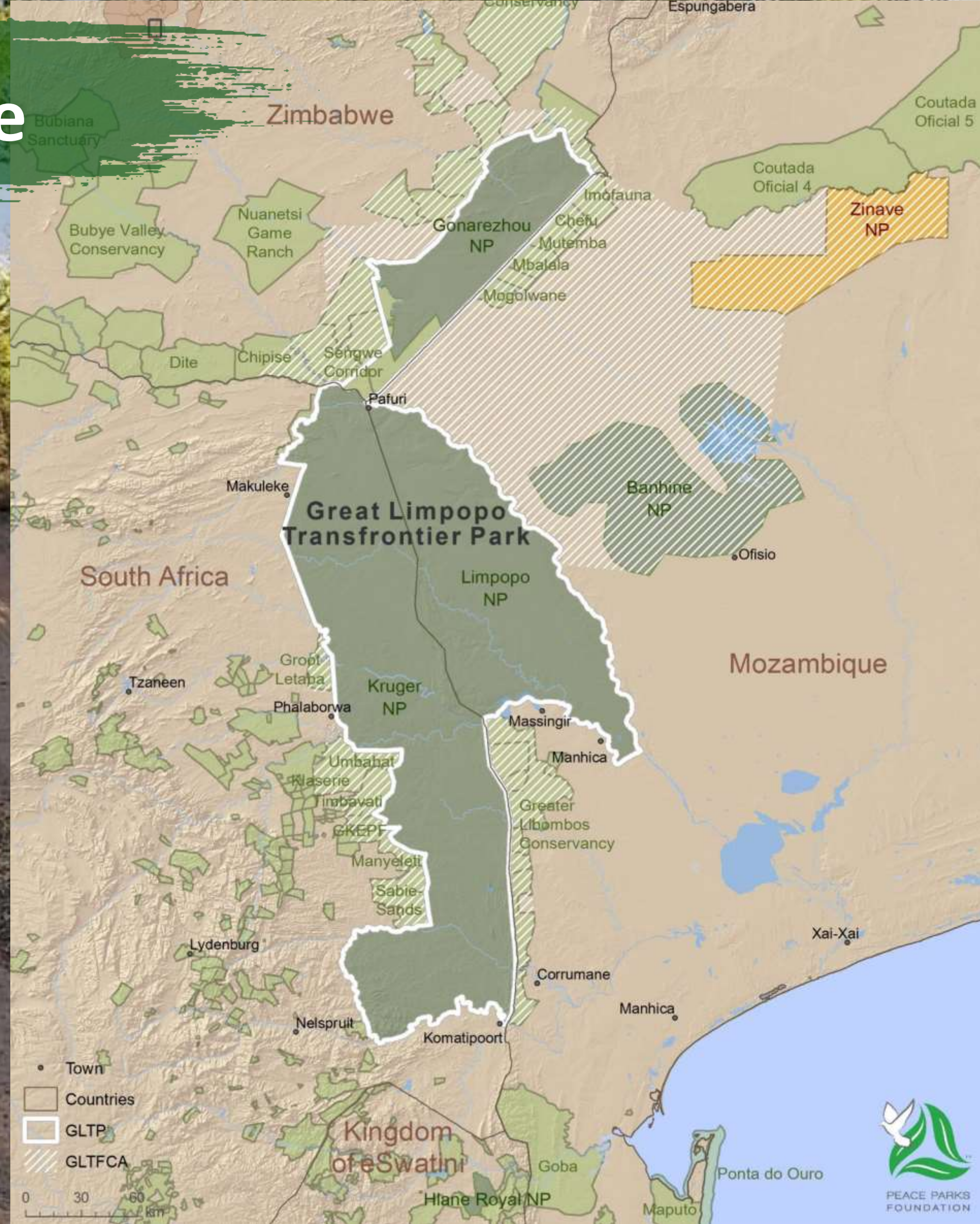
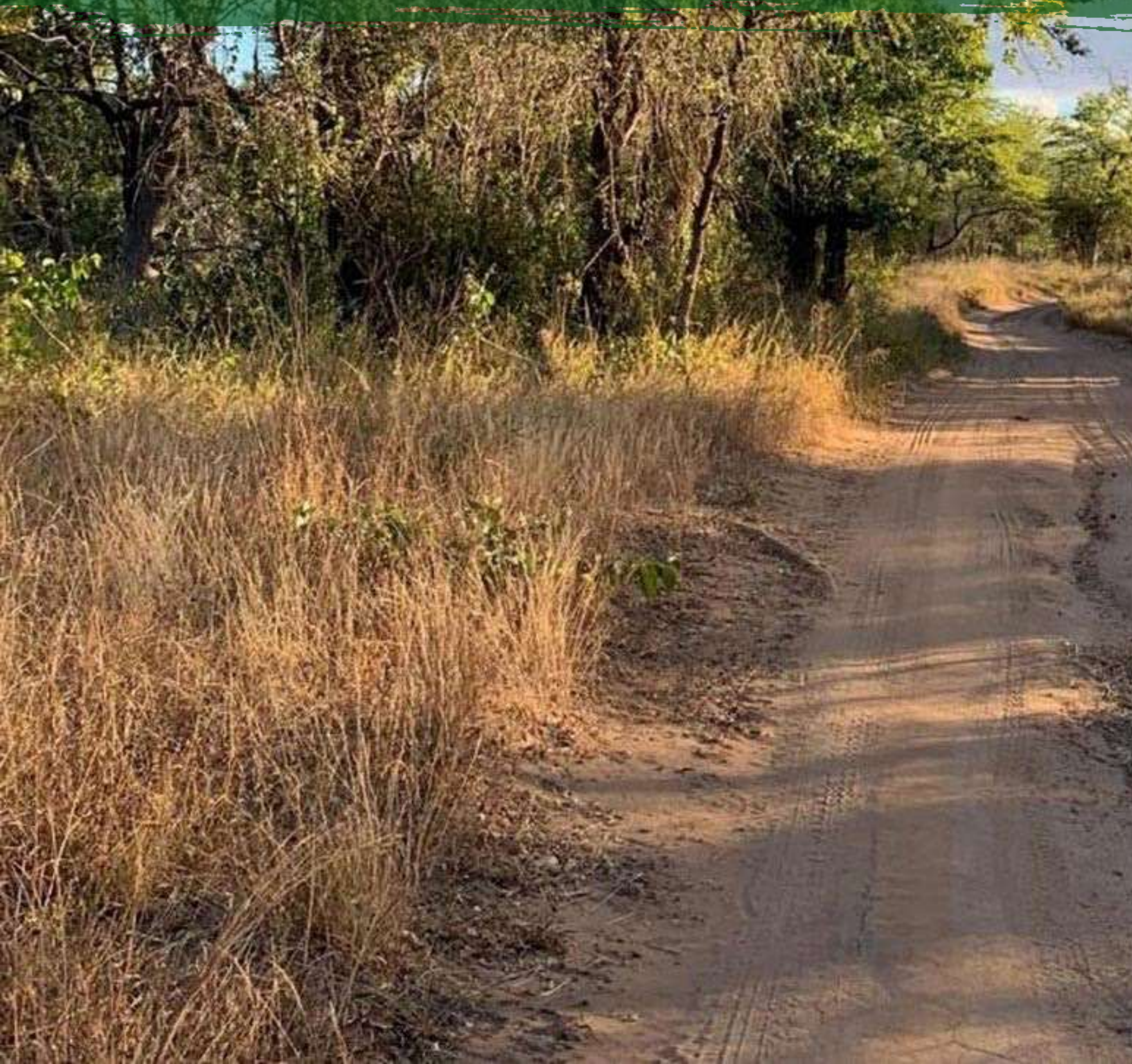
163

SUSPECTED
POACHERS
ARRESTED

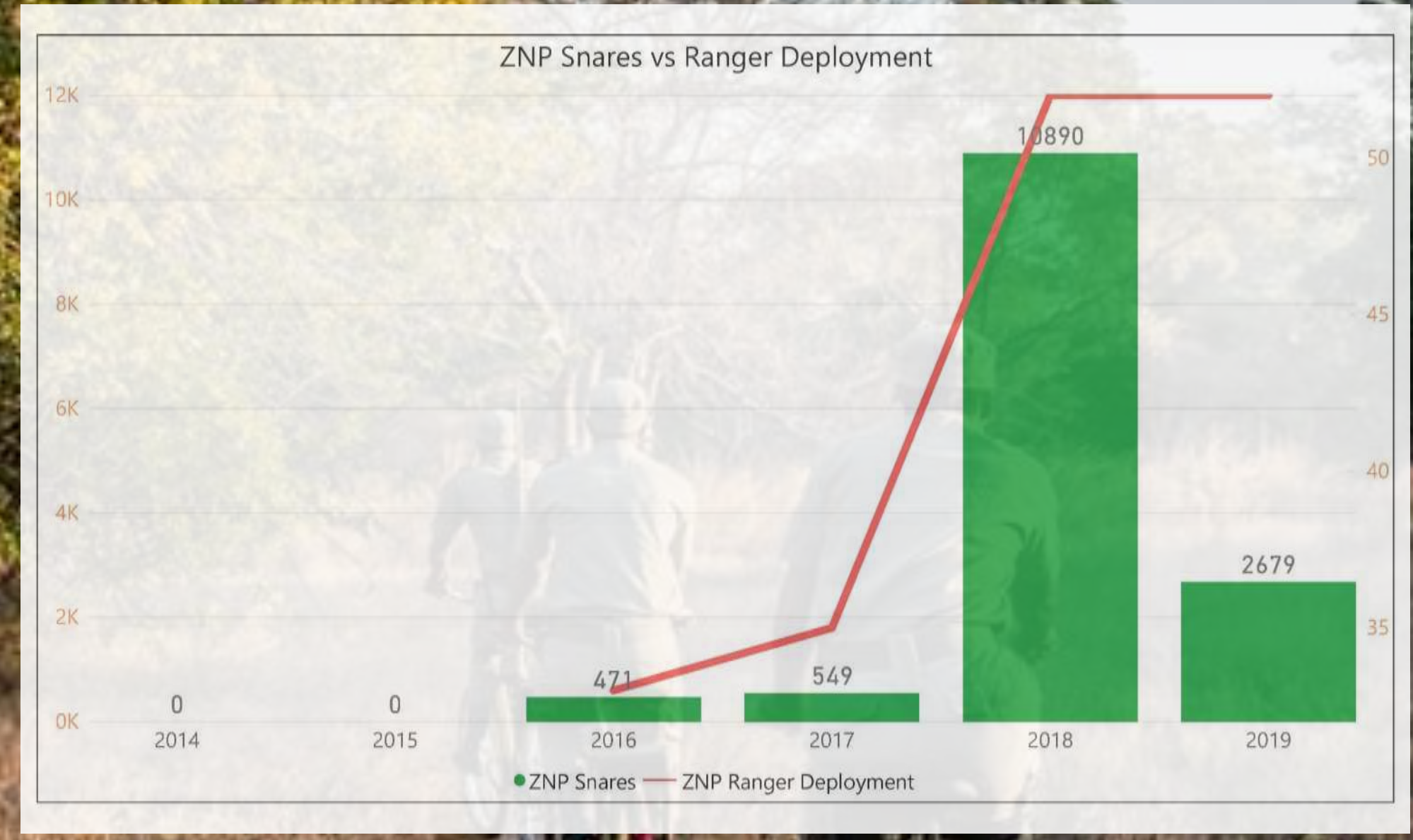
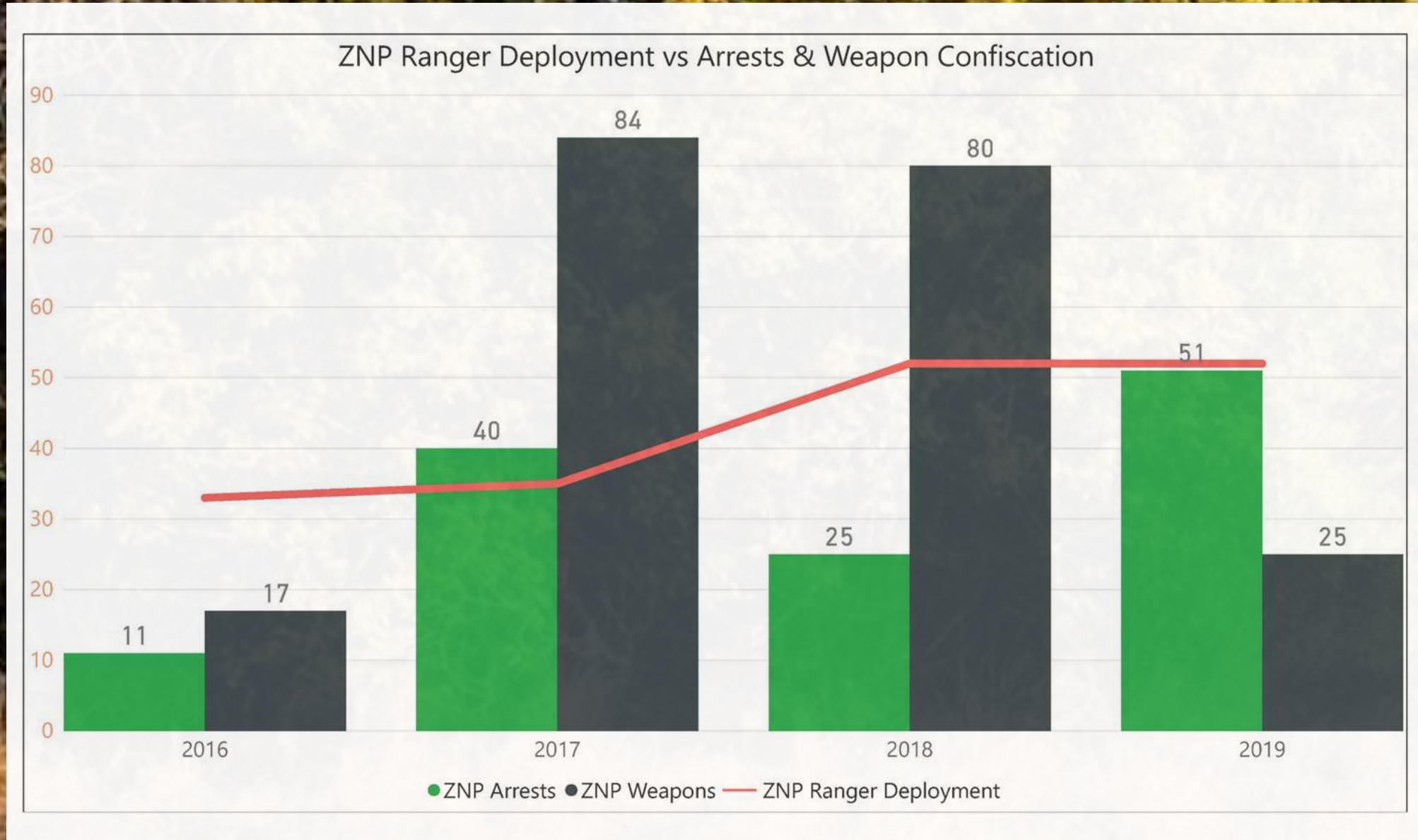


PROTECT

Protecting Mozambique - Zinave

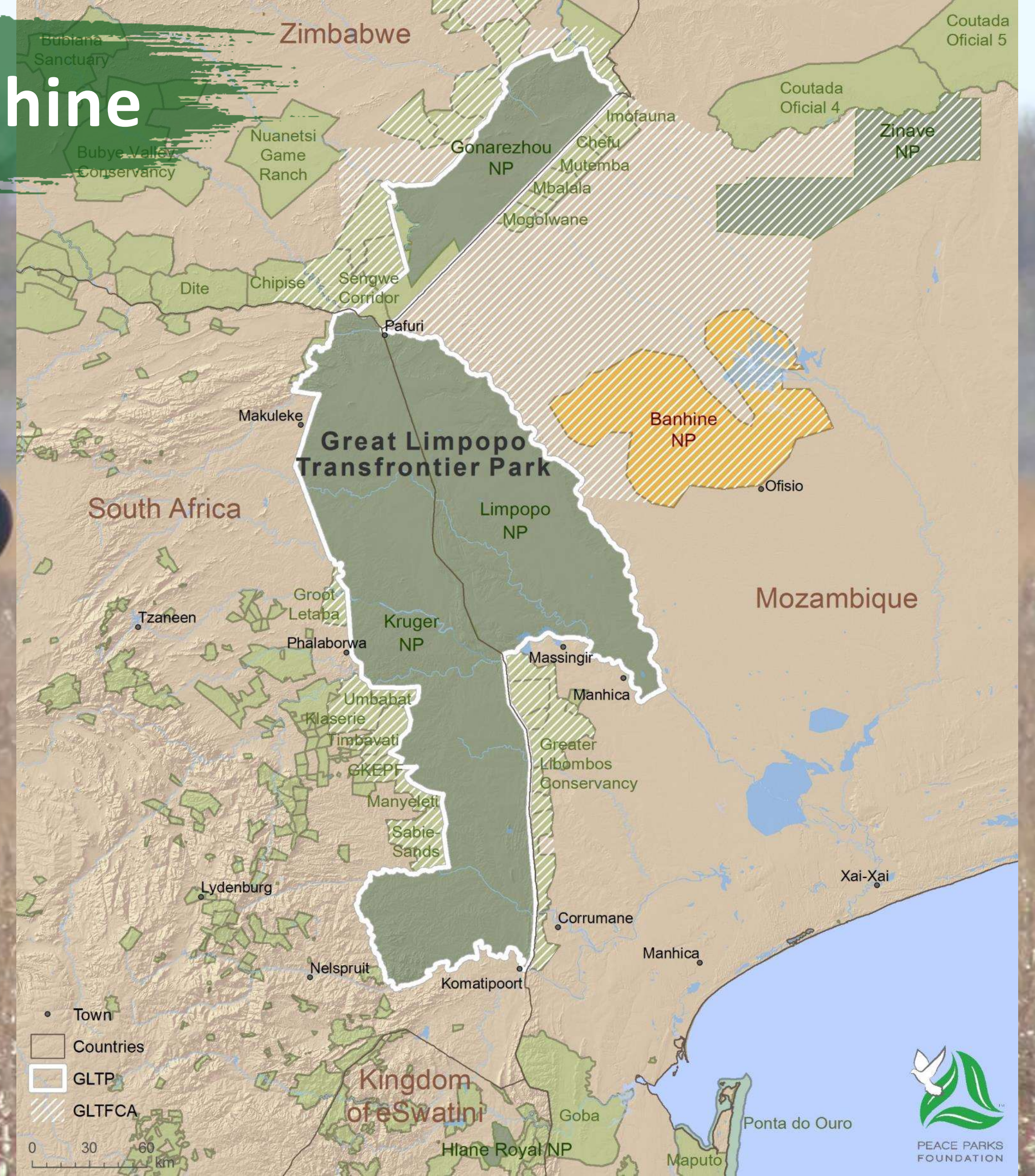


Protecting Mozambique - Zinave

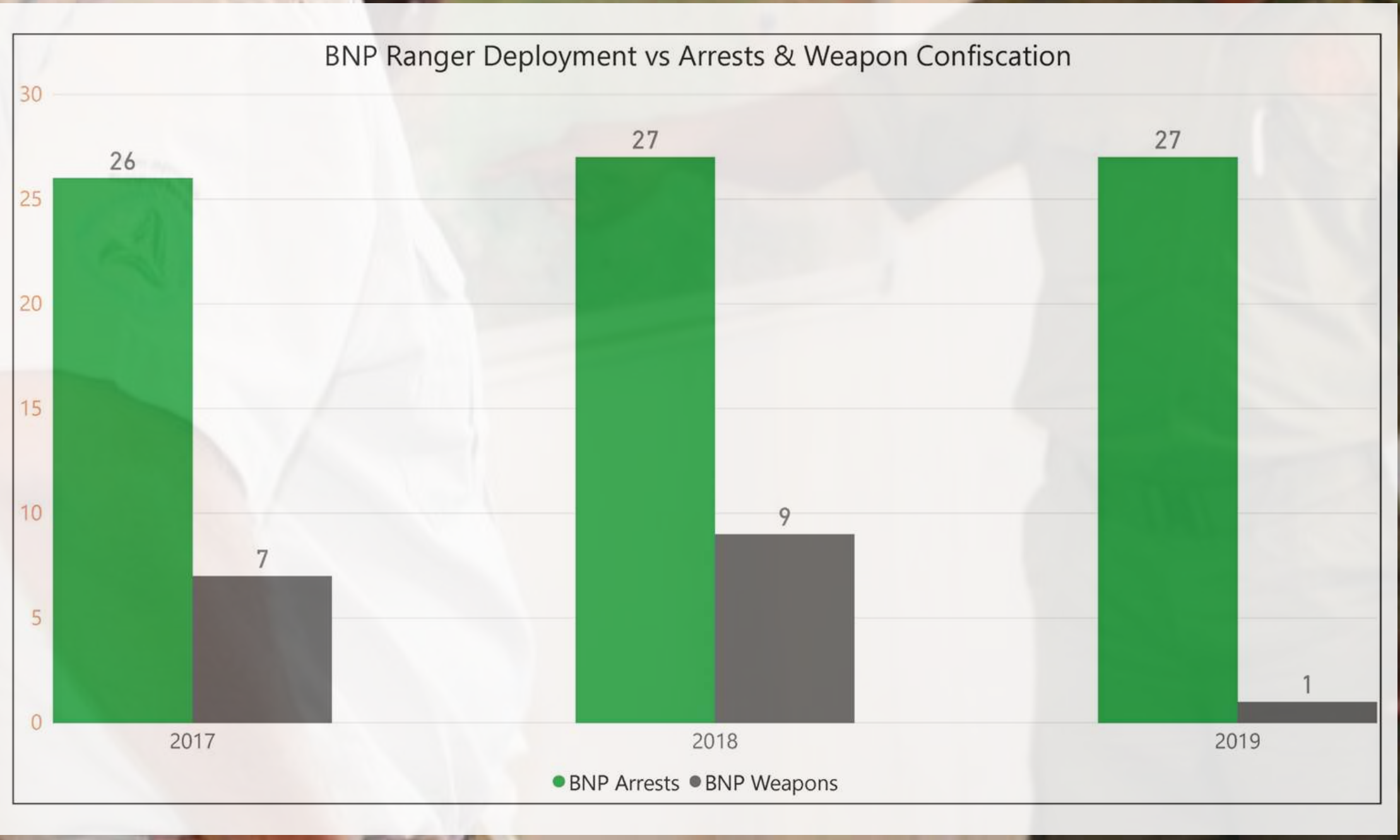


PROTECT

Protecting Mozambique - Banhine

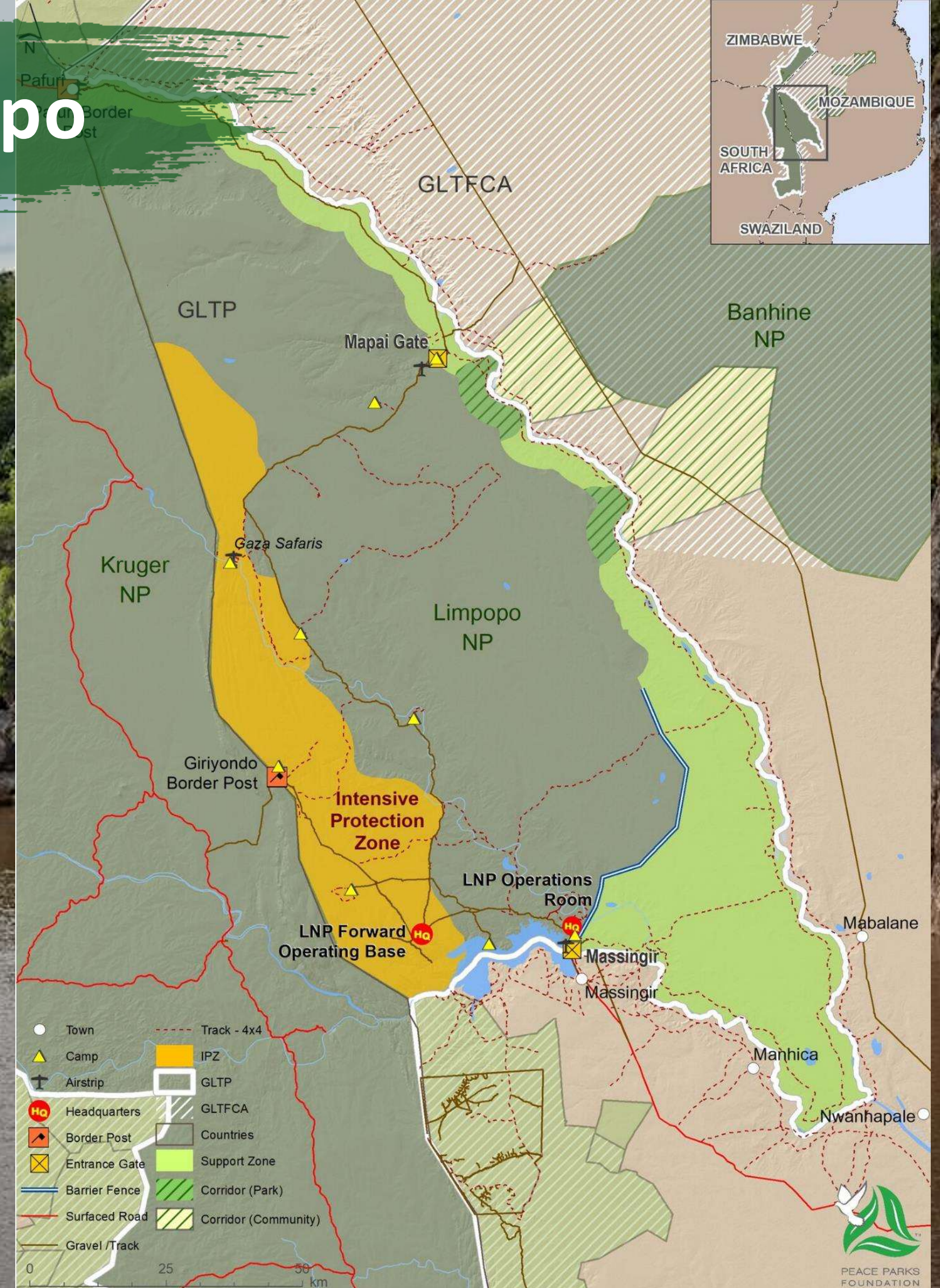
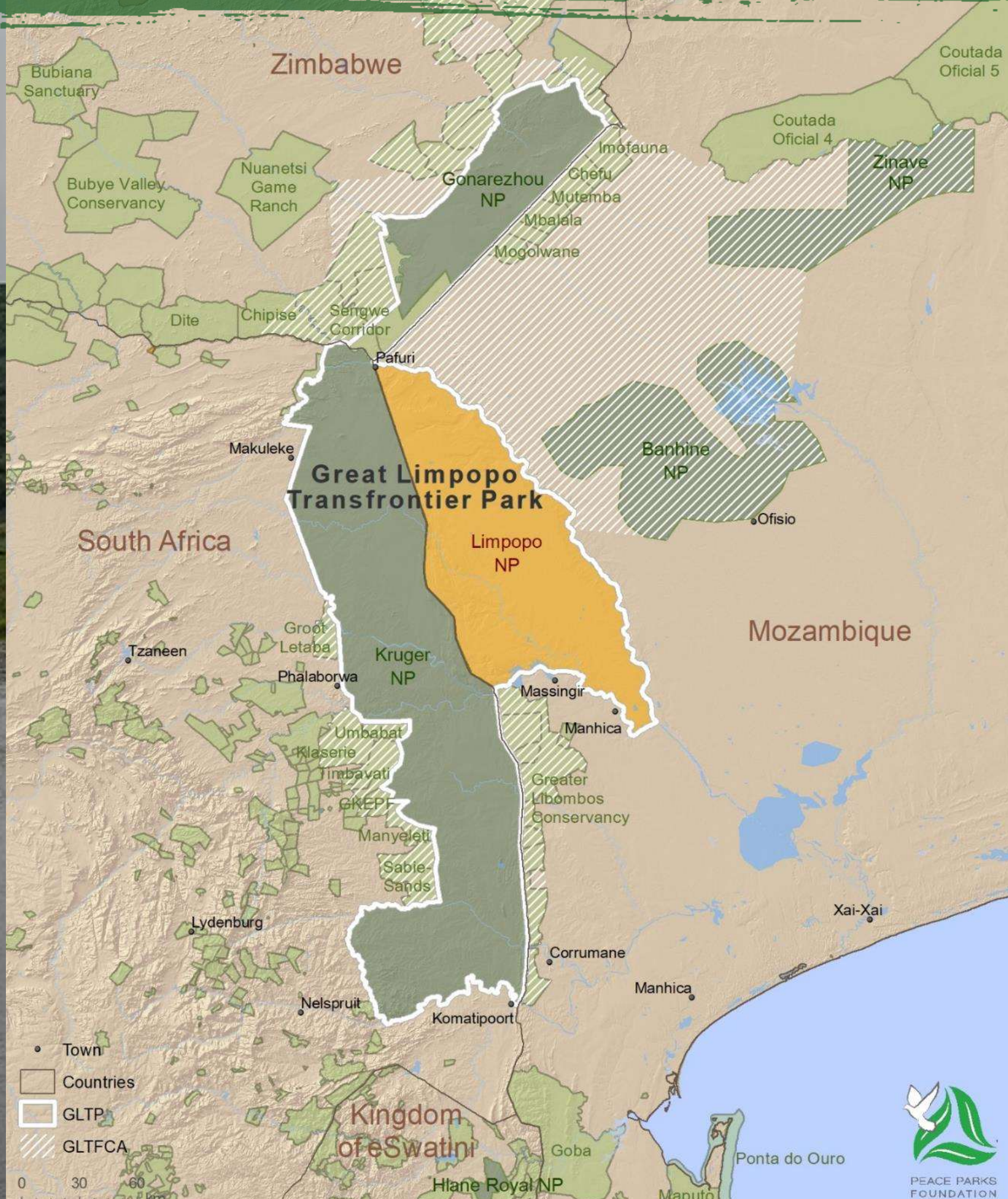


Protecting Mozambique - Banhine



PROTECT

Protecting Mozambique – Limpopo

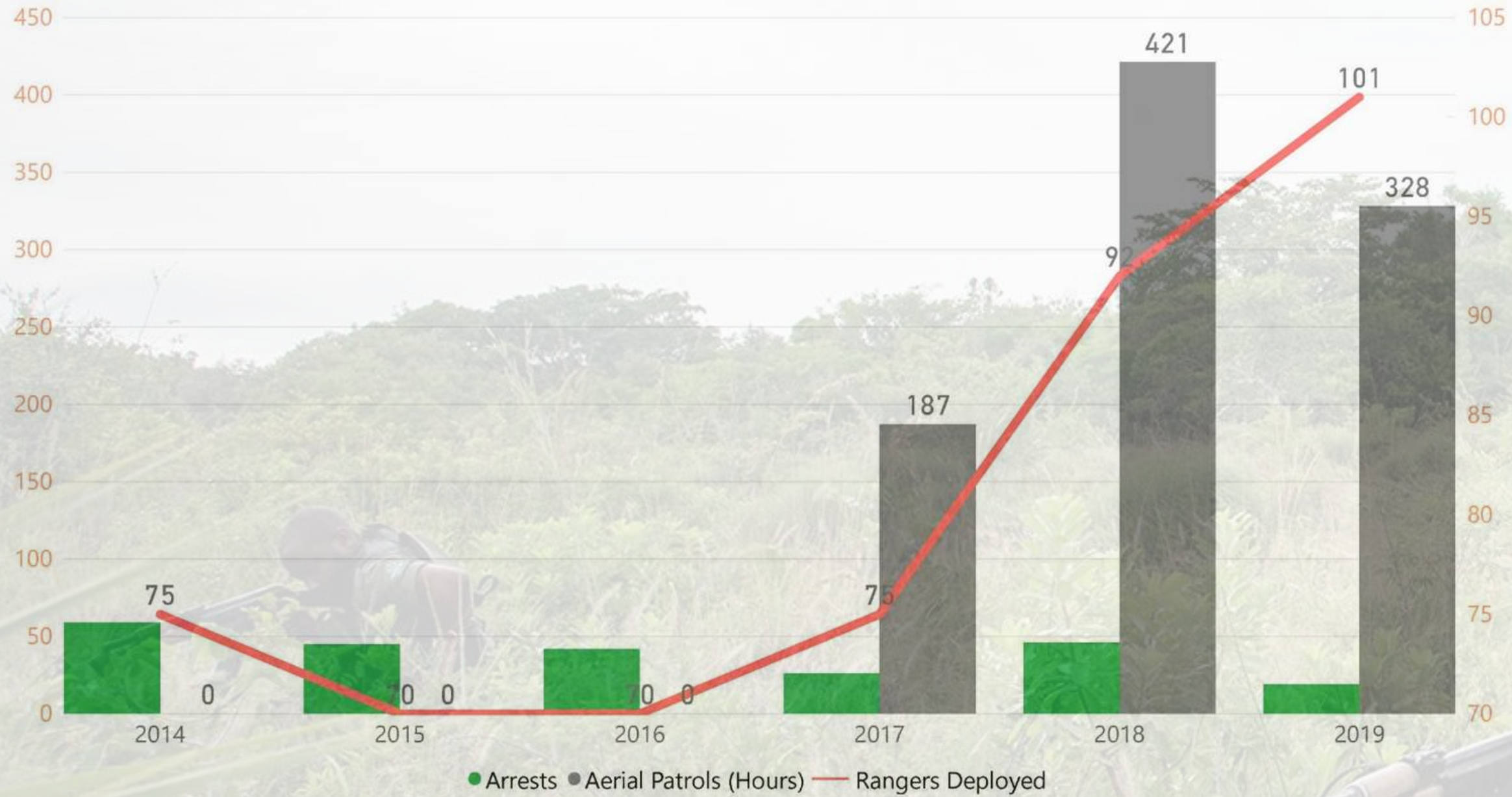


PROTECT

Protecting Mozambique – Limpopo

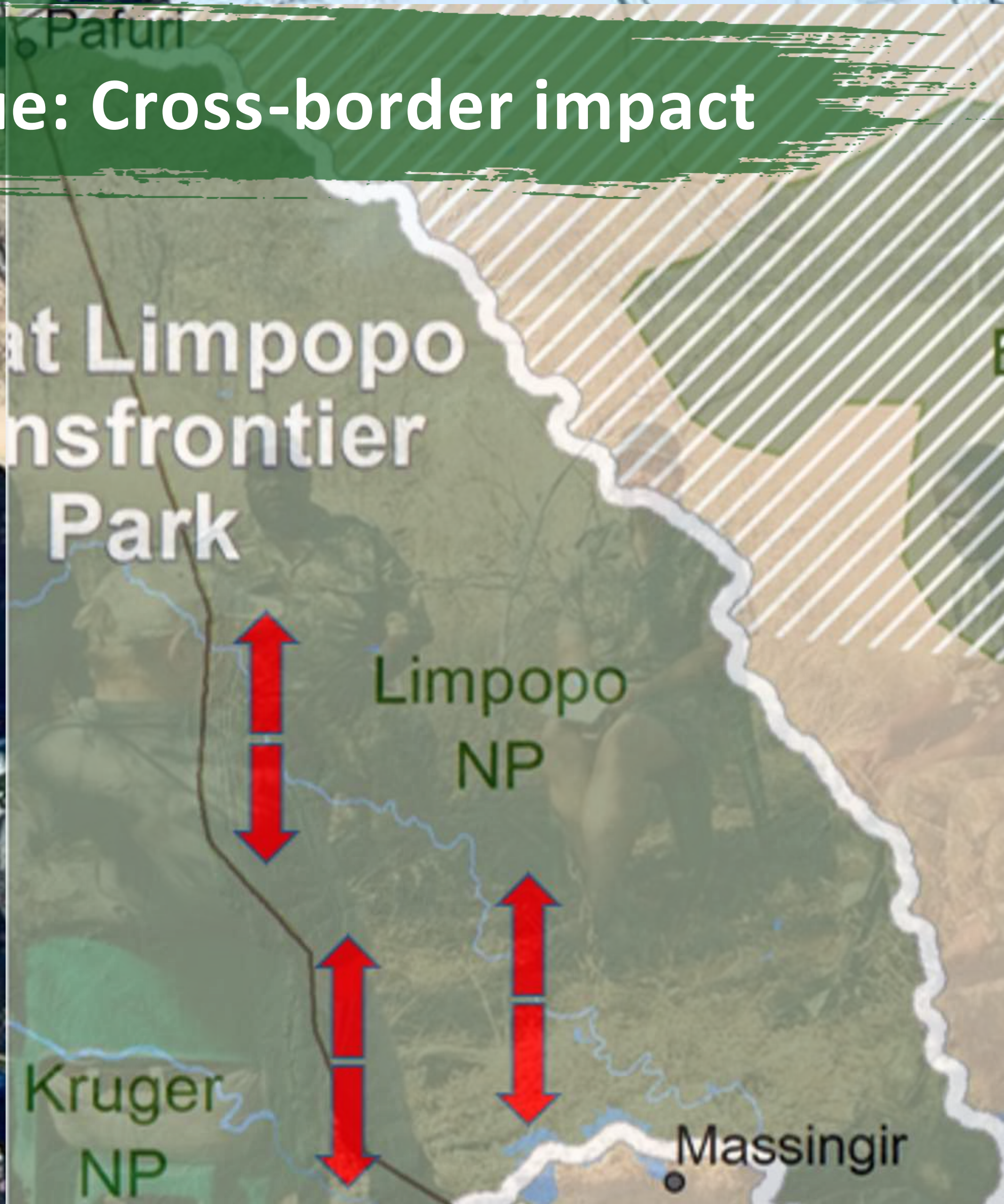


LNP Aerial Patrols vs Rangers Deployed & Arrests Made



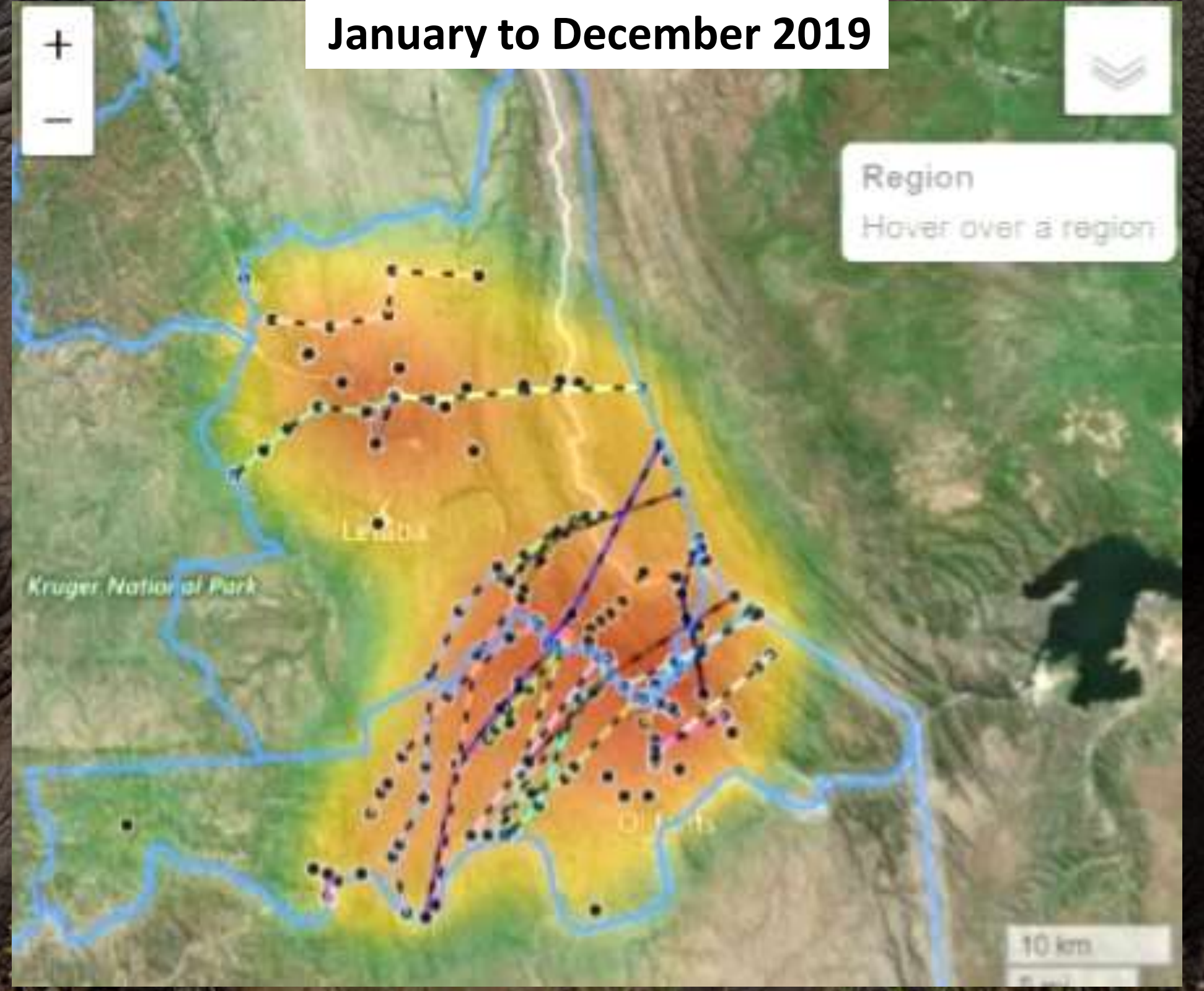
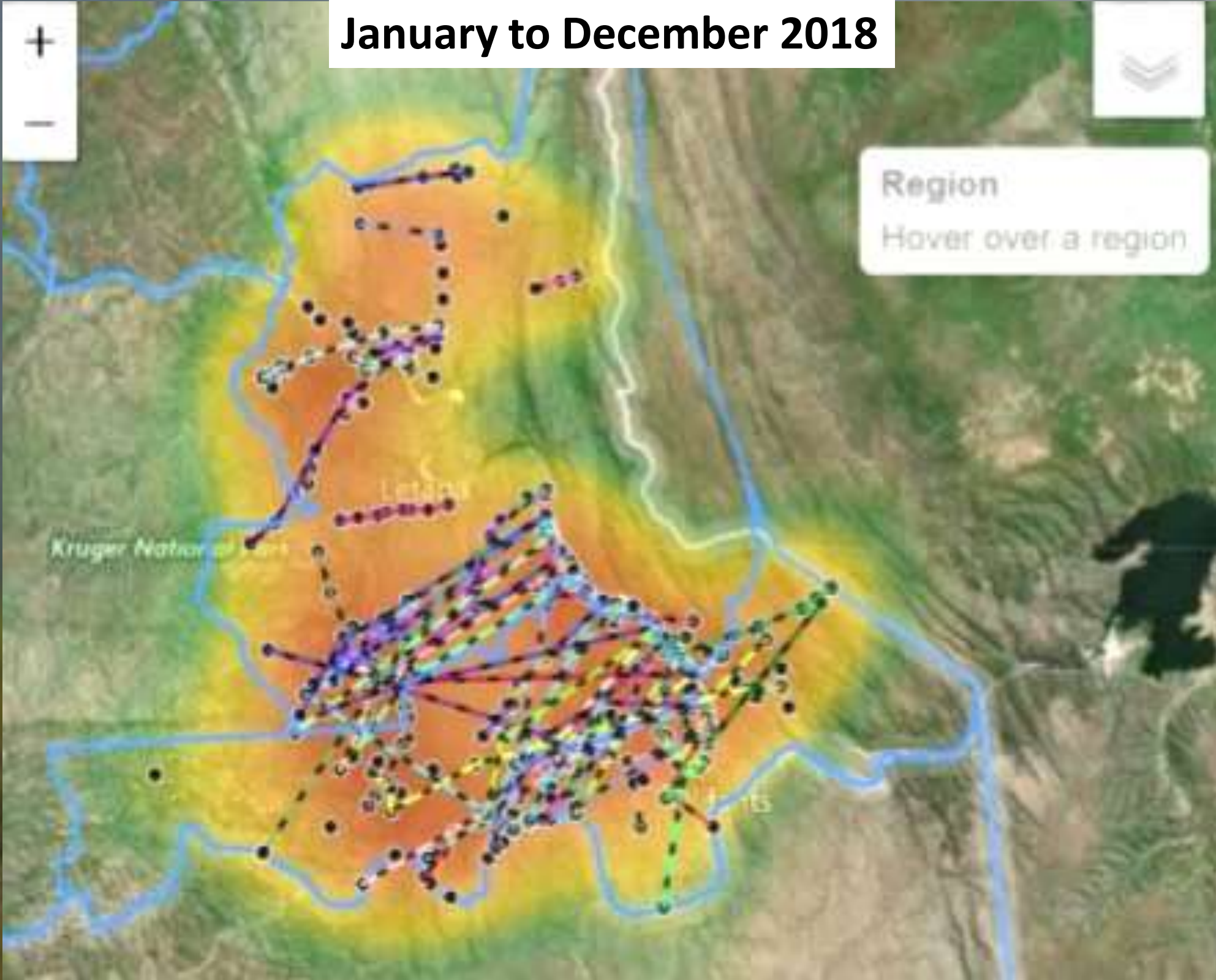
PROTECT

Protecting Mozambique: Cross-border impact



PROTECT

Impact in Kruger National Park



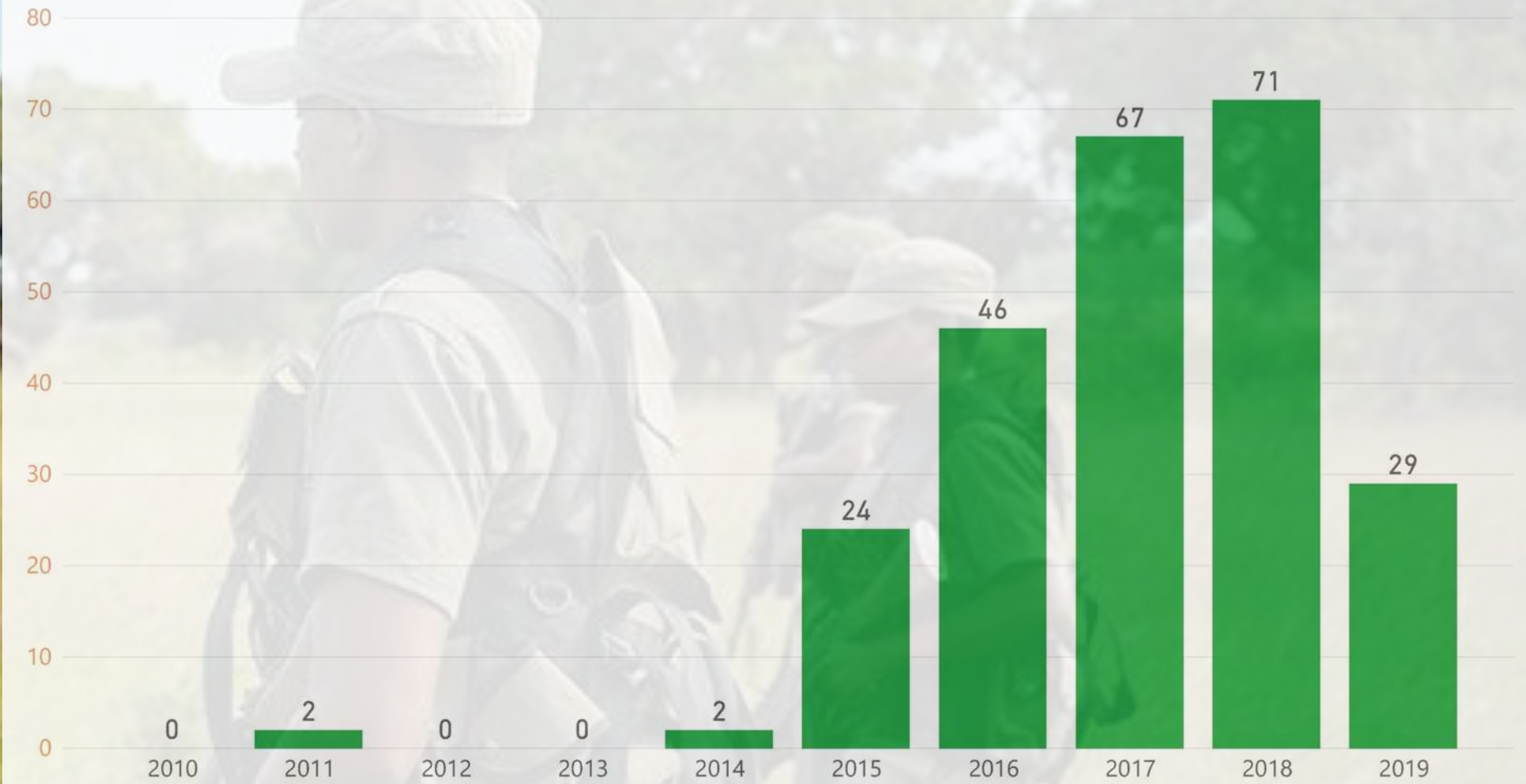


Impact in Kruger National Park

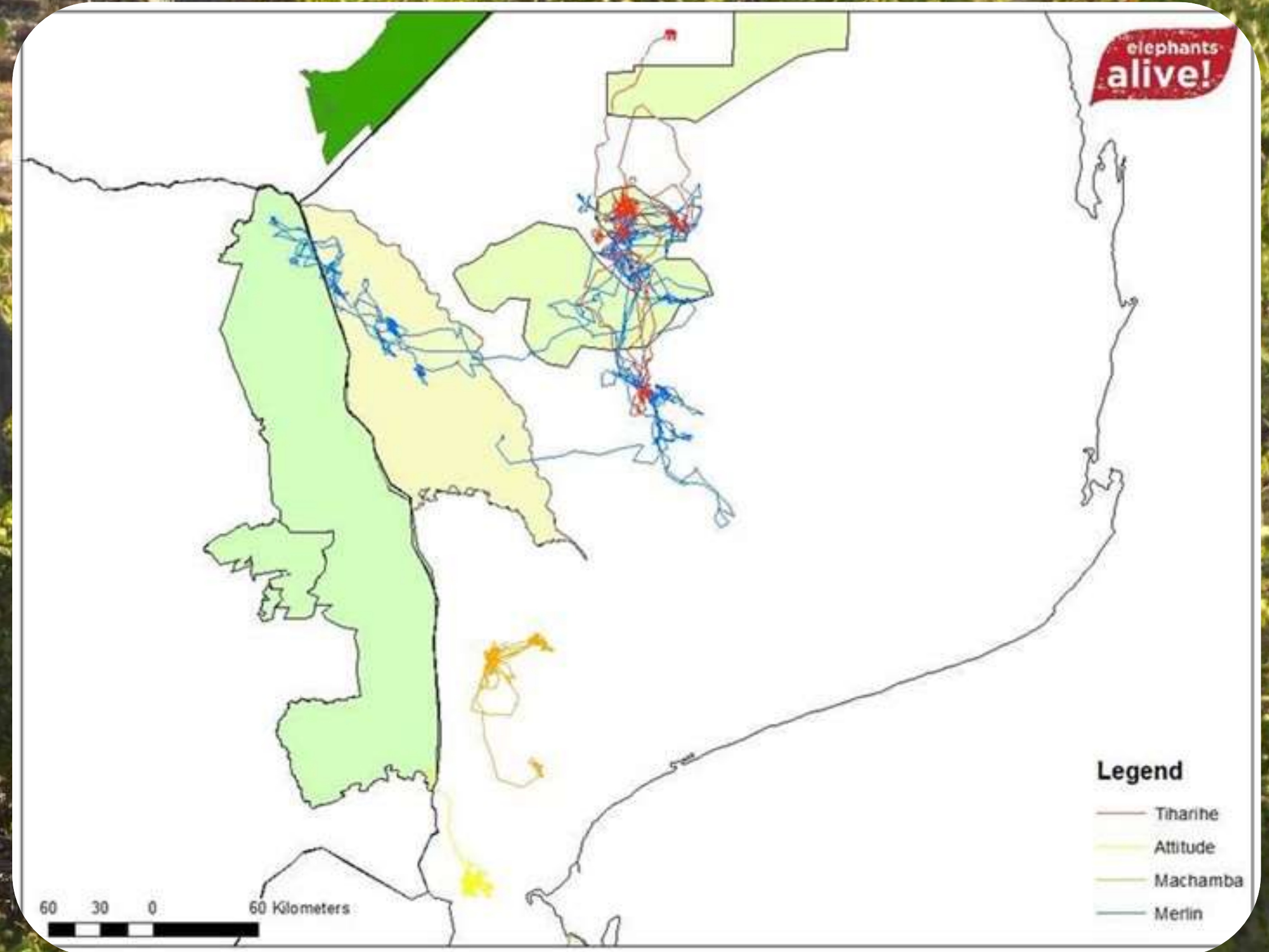
KNP Rhino Poaching Statistics



KNP Elephant Poaching Statistics



Connecting corridors





Thank You



PEACE PARKS™
FOUNDATION

peaceparks.org