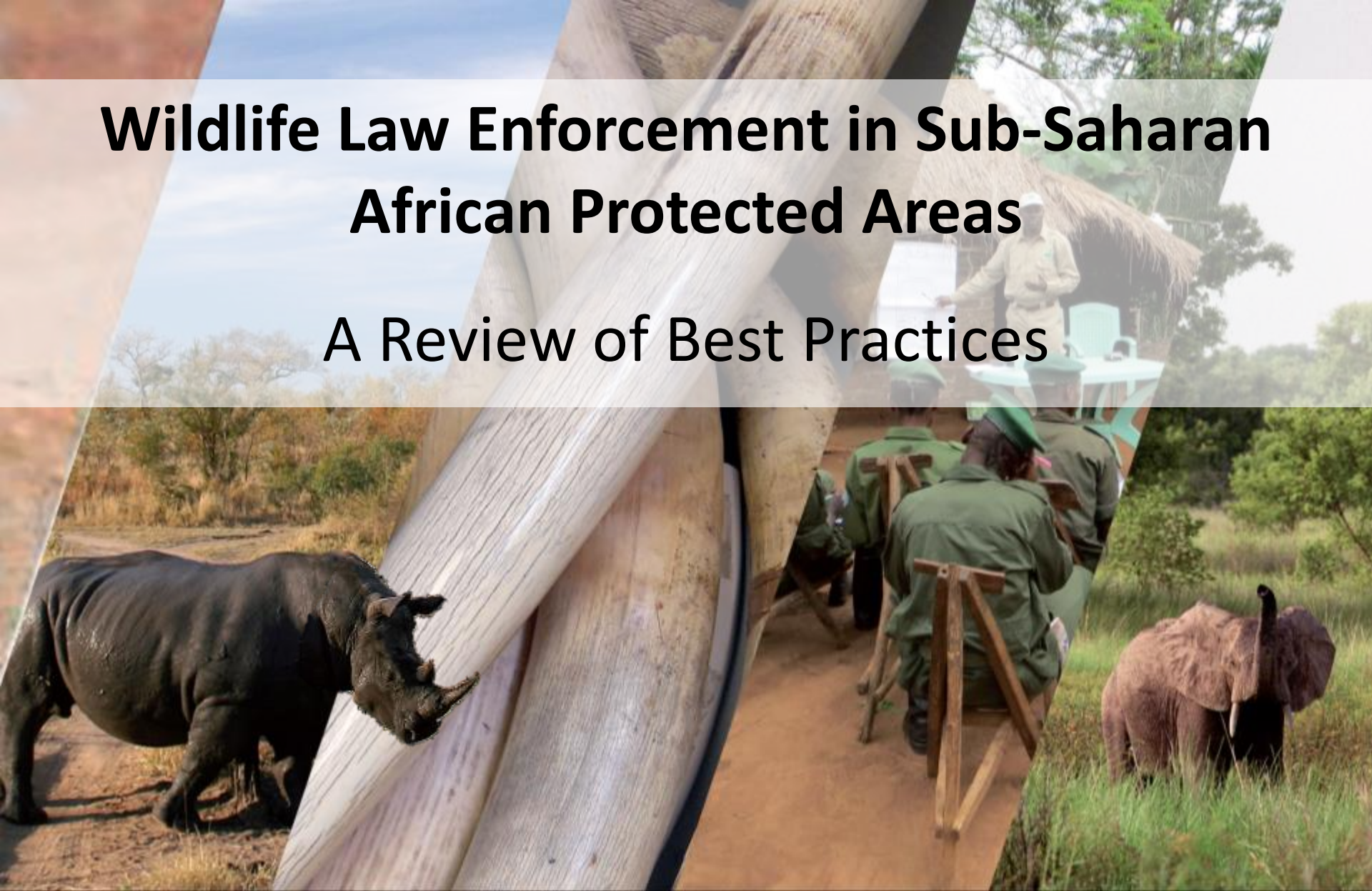


# Wildlife Law Enforcement in Sub-Saharan African Protected Areas

## A Review of Best Practices



# LE Review: Key Features - 1

## What?

- Reviews emerging and longstanding LE best practices
- Not an exhaustive manual of all LE practices
- Does not cover advanced LE practices that are underway in some PAs



## Why?

- Aims to influence and inform the implementation of more effective anti-poaching interventions
- Help improve communication and knowledge sharing across sectors and countries



# LE Review: Key Features - 2

## Where?

- Primarily aimed at protected area or site-level
- Does describe some LE practices relevant at the sub-national and national level



## Who?

- Aimed at site-level managers and professionals
- Including government, community and private sector managers
- NGOs and other organisations supporting site-level LE

# Law Enforcement Review: Structure

## How?

- 3 site-level LE “strategies”

1. LE Patrols
2. LE Management
3. Intelligence & Investigations

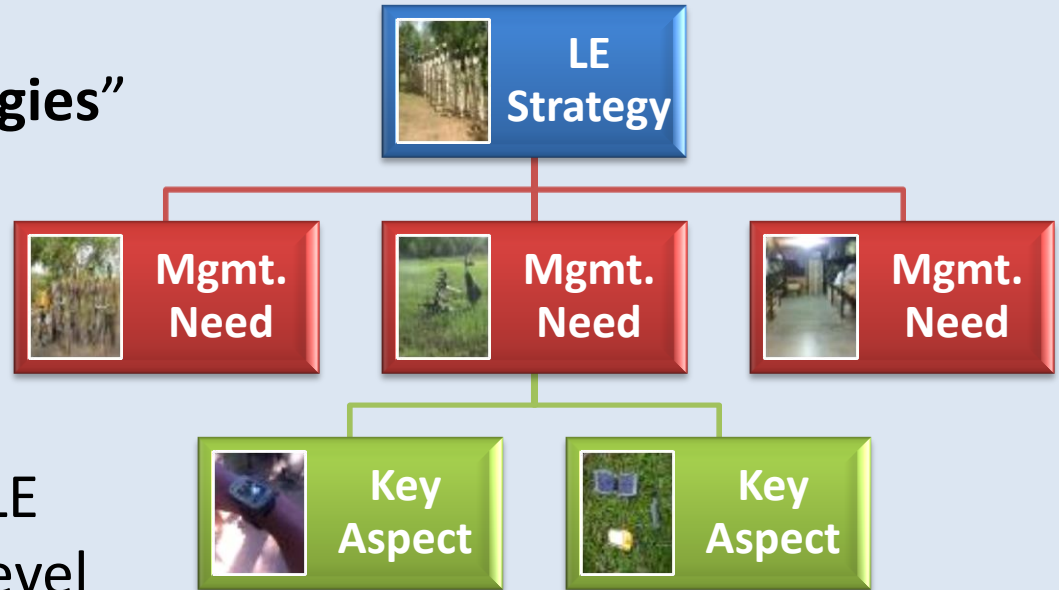
- The key packages of LE activities at the site level

- Broken down into key “management needs”

- Identified by PA managers and professionals as being critical to success

- Further broken down into “key aspects”

- Main issues that can help managers to achieve effective and efficient LE practice



# Broad Participation via Online Survey



Republic of Namibia  
Ministry of Environment & Tourism



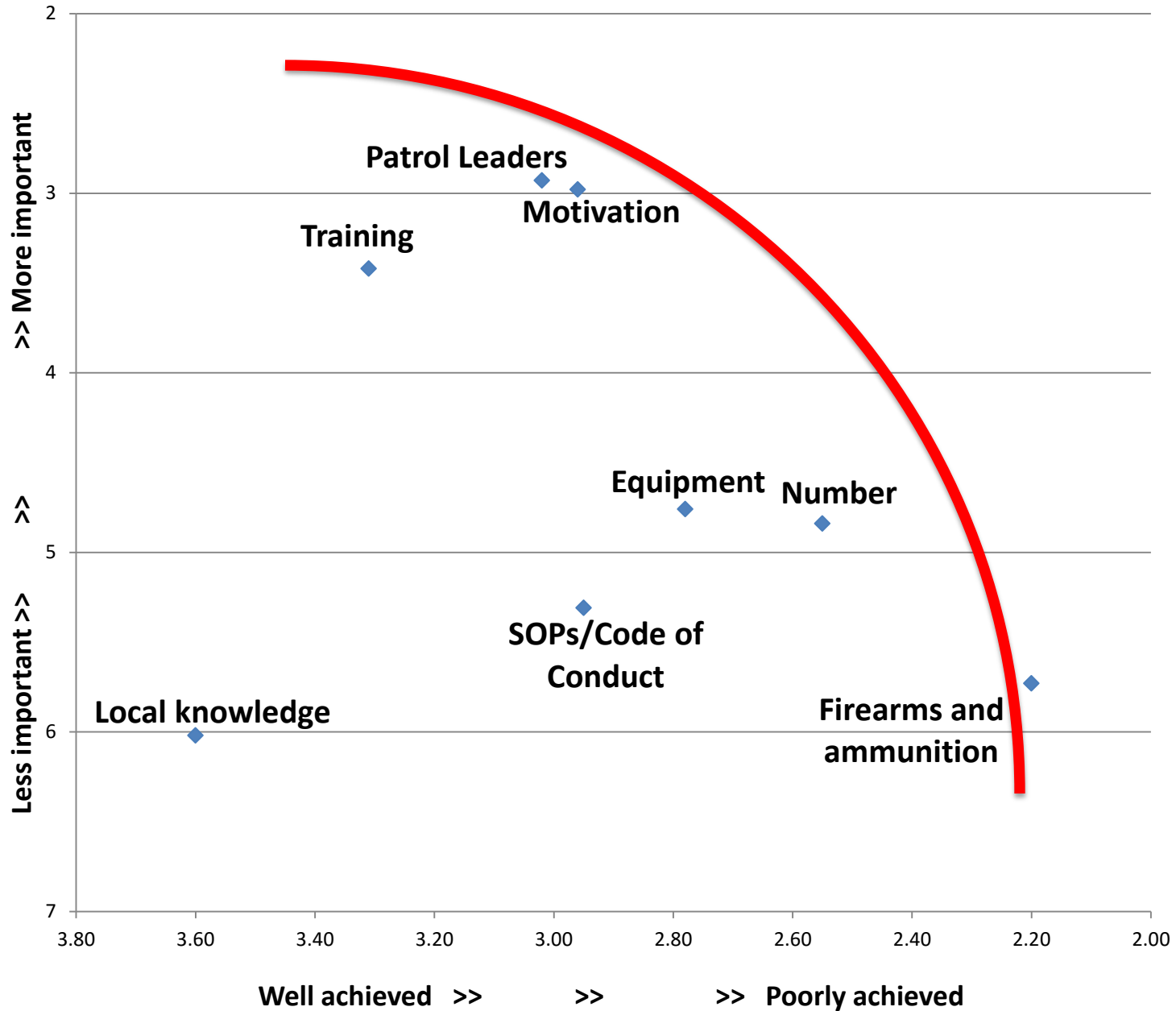
KENYA  
WILDLIFE  
SERVICE



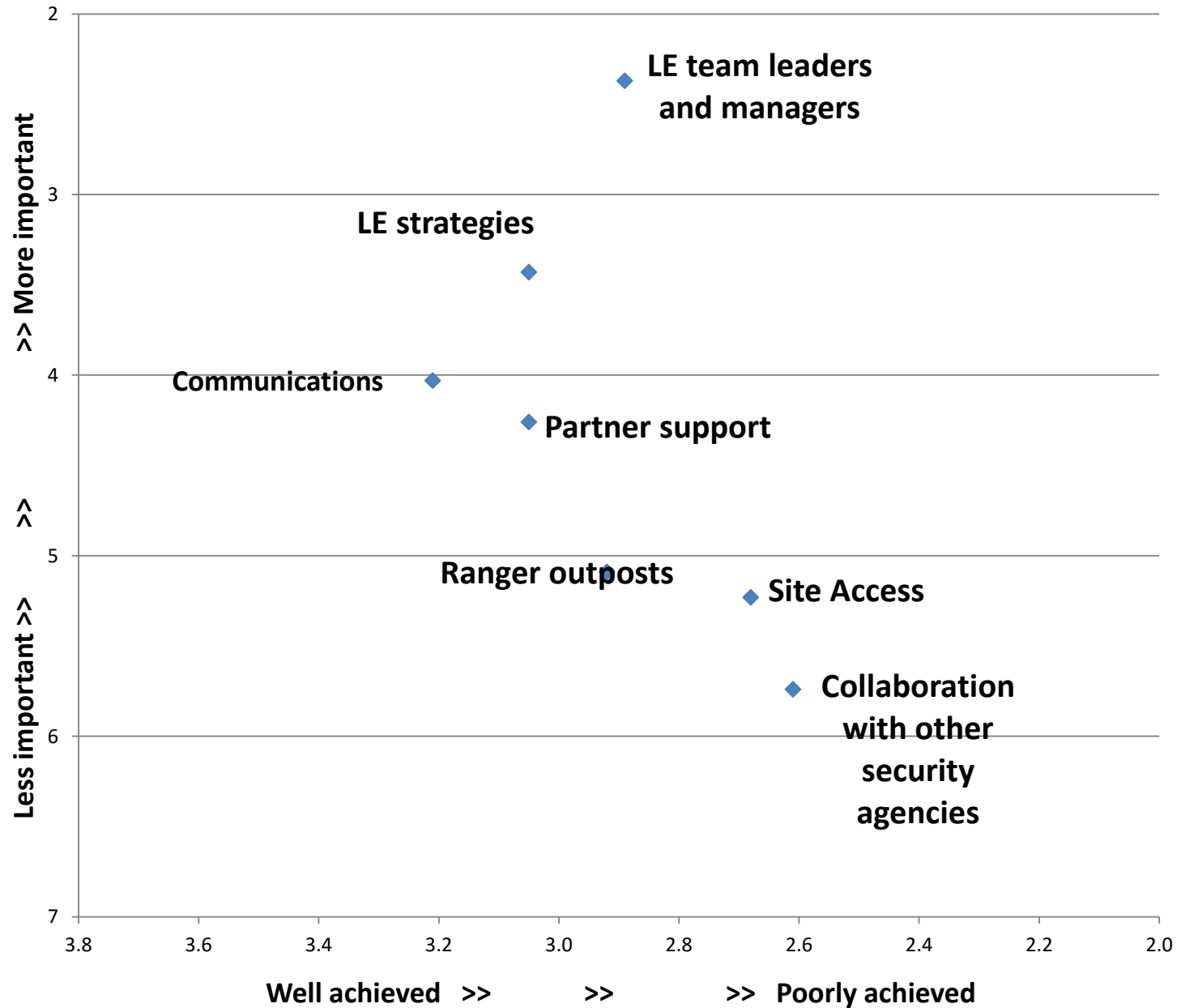
- 106 survey responses
- From 22 countries
- Consultations in ten countries



# Level of Importance/Achievement: Ranger Patrols



# Level of Importance/Achievement: LE Management



# General Findings - 1

***“The basics need to be sorted out before innovative technologies can be applied”***

- No universal solutions or “quick fixes” to tackling wildlife crimes in PAs
- Effective approaches are typically neither glamorous nor ‘cutting edge’



***“There is no substitute for a well-equipped, well-trained, and highly motivated ranger.”***

- Most successful LE approaches are straightforward and well-known
- But to succeed require determination, hard work and investment
- Doing many basic, simple things well => Effect is cumulative





## General Findings - 2

***“Inter-agency collaboration is often taken for granted, but practical, clear frameworks and a shared vision are necessary”***

- There is much relevant experience from other sectors:
  - Technical: police, intelligence, military
  - Management: private sector



***“Commitment and dedication by senior staff are critical. Good working conditions, remuneration and leadership are essential to achieving this”***

- PA managers are under constant pressure and have little spare time or resources to investigate and test new LE methods
- This review may provide some insights



# Three Site Level LE Strategies

## **1. Law Enforcement Patrols**

Effectiveness of field patrols, focused on the capacity of patrol staff

## **2. Law Enforcement Management**

Management, planning and implementation of LE operations

## **3. Intelligence & Investigations**

Implementation, and integration and into LE operations

# LE Patrols: Management Needs

## 1. Skilled and Knowledgeable Patrol Staff

- Selection, Training, Re-training

## 2. Experienced and Competent Patrol Leaders

- Experience, Skills



## 3. Suitable and Sufficient Equipment and Supplies

- Field Equipment
- Firearms
- Communications

## 4. Appropriate Terms and Conditions of Service

- Performance Evaluations, Contracts

## 5. Supported and Incentivized Patrol Staff

- Basic needs (satisfiers), Incentives



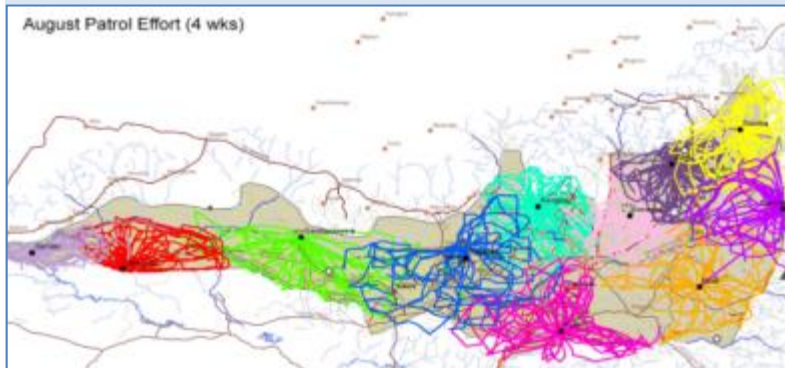
# LE Management: Management Needs

## 1. Competent and Effective Leaders

- Authority, Staff Engagement

## 2. Proactive and Dynamic Patrol Strategies

- Pre-emptive planning
- Tactics (patrols, OPs, dogs)



## 3. Collection and Use of Patrol Data

- Collection process
- Feedback/reports (hardware/software)

## 4. Effective Management Systems & Infrastructure

- Ops room, access, stores/inventory

## 5. Clear and Consistent Standards & Procedures

- SOPs/conduct (re-iteration), corruption



# Intelligence & Investigations: Management Needs

## 1. Specialized Intelligence and Investigations Capacity

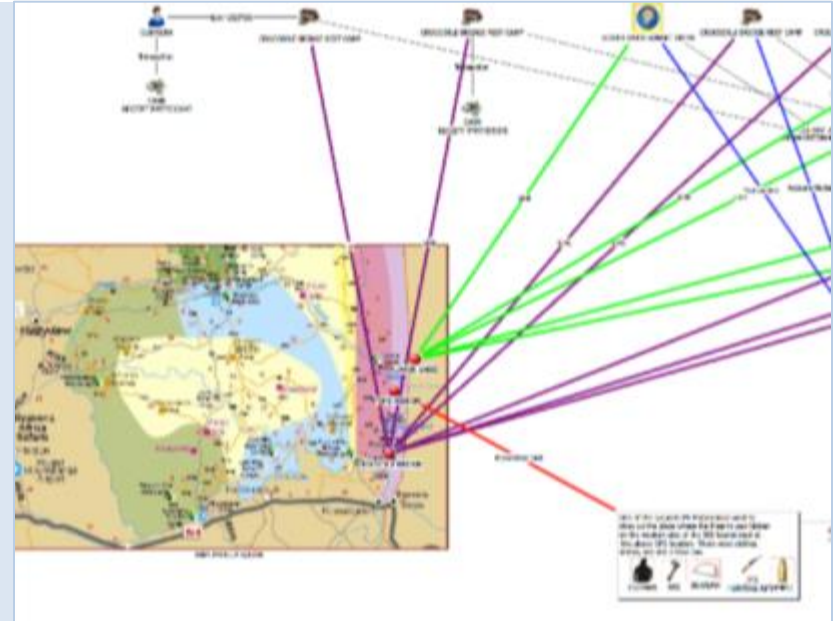
- Dedicated units, basic equipment
- Inter-agency collaboration

## 2. Comprehensive Intelligence Gathering

- Informants, rewards, electronic intelligence

## 3. Efficient Data Management and Analysis

- Data organisation, feedback to management



## 4. Robust Evidence Handling and Management

- Crime scene management
- Evidence collection

## 5. Competent Case Development and Charging

- Case report preparation
- Preparing prosecutions
- Monitoring cases and offenders

# LE Review: Issues Not Addressed in Detail

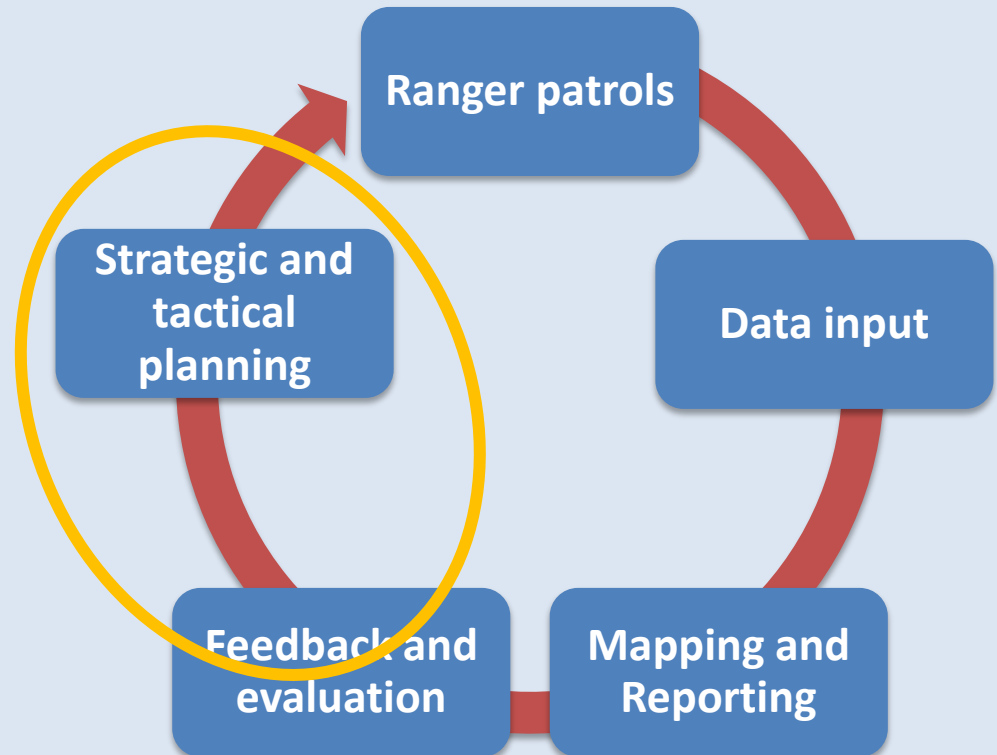
- The role of **communities** in supporting site-level law enforcement
  - Beyond Enforcement



- The role of **corruption** as a crucial factor in undermining efforts to strengthen LE
  - Report deals with corruption that can potentially be addressed at the site level
- The role of **sustainable financing** in enabling LE efforts
  - Cost of LE escalates as ever more complex responses are needed to deal with increasingly sophisticated wildlife crime

# Planned Follow-up Initiative: Strengthening LE Planning Methods - 1

- As organised wildlife crime intensifies, LE responses become ever more complex
- Increasingly sophisticated systems for monitoring LE delivery
  - E.g. SMART



LE Adaptive Management Cycle

- Review highlights the need to strengthen strategic and tactical LE planning

# Planned Follow-up Initiative: Strengthening LE Planning Methods - 2

- LE Planning support initiative aims to:
  - Develop practical, simple tools and a planning framework for site-level LE planning
  - Based on LE strategies, management needs and key aspects set out in LE Review
  - Linked to other best practices (e.g. SMART, MIKE LE Capacity Assessment, WWF COPS)
- Piloting in two protected areas in eastern and southern Africa
- **Suggestions for suitable pilot areas would be much appreciated!**





# Thank You!



## Wildlife Law Enforcement in Sub-Saharan African Protected Areas

### A Review of Best Practices

