



International Law Enforcement Academy



“Empowering Those Who Serve”



SADC TFCA NETWORK SYMPOSIUM 2016



Francisco R. Berrios
ILEA Program Director

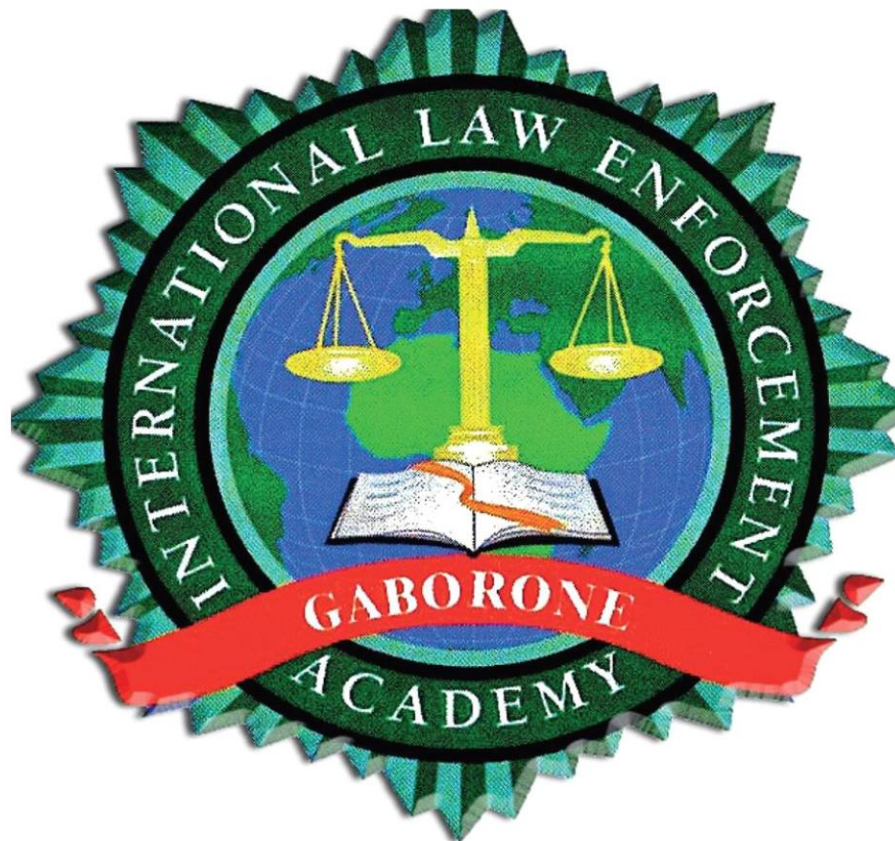


SADC TFCA NETWORK SYMPOSIUM 2016



WELCOME DELEGATES!





'Empowering Those Who Serve'





OBJECTIVES

1. To support criminal justice institution-building in Africa, with an emphasis on the rule of law, democracy and the building of law enforcement capacity.
2. To strengthen cooperation among countries in Africa to address problems of crime and terrorism.



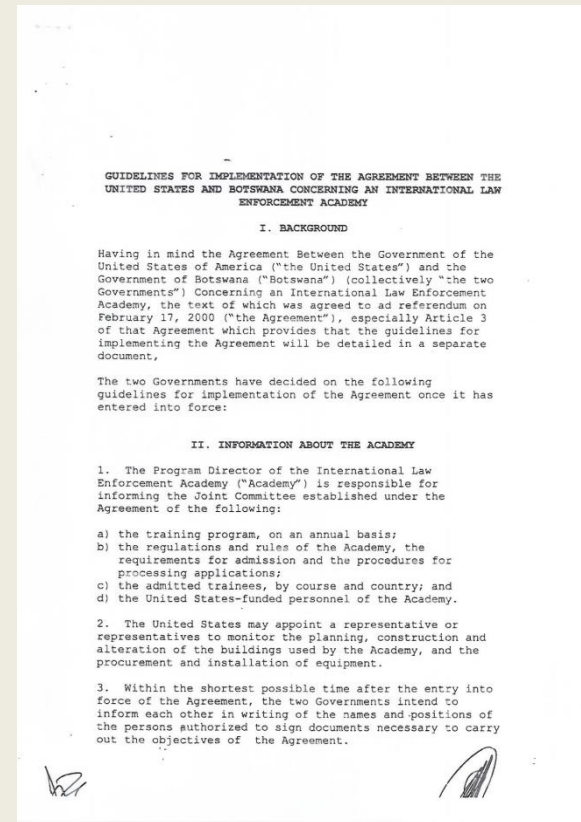
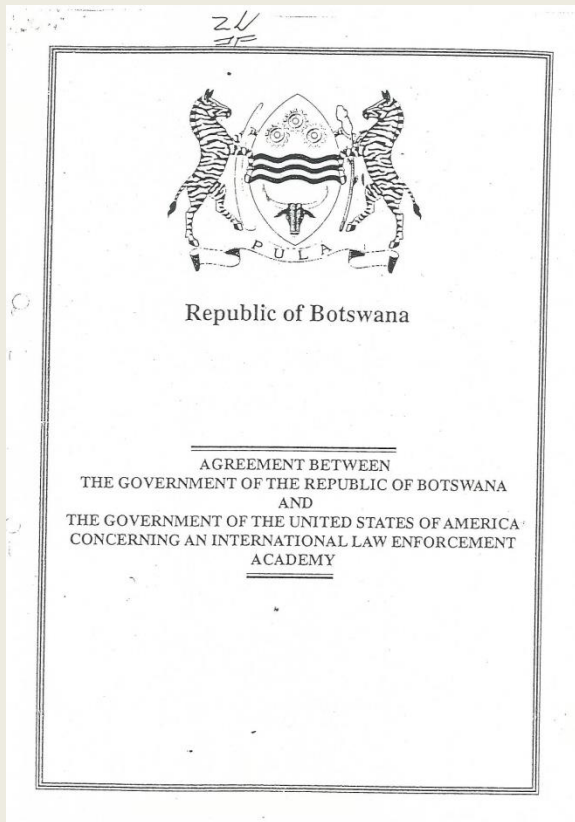


OBJECTIVES, CONT.

3. To strengthen cooperation among the law enforcement communities of Botswana, other ILEA African countries and the U.S.
4. To provide quality training and institution-building assistance to combat transnational crimes including terrorism, narcotics trafficking, financial crimes, cyber crime, illegal firearms trafficking and migrant smuggling.



Partnership with the Government of Botswana



Implementation Documents



INTERNATIONAL LAW ENFORCEMENT ACADEMIES

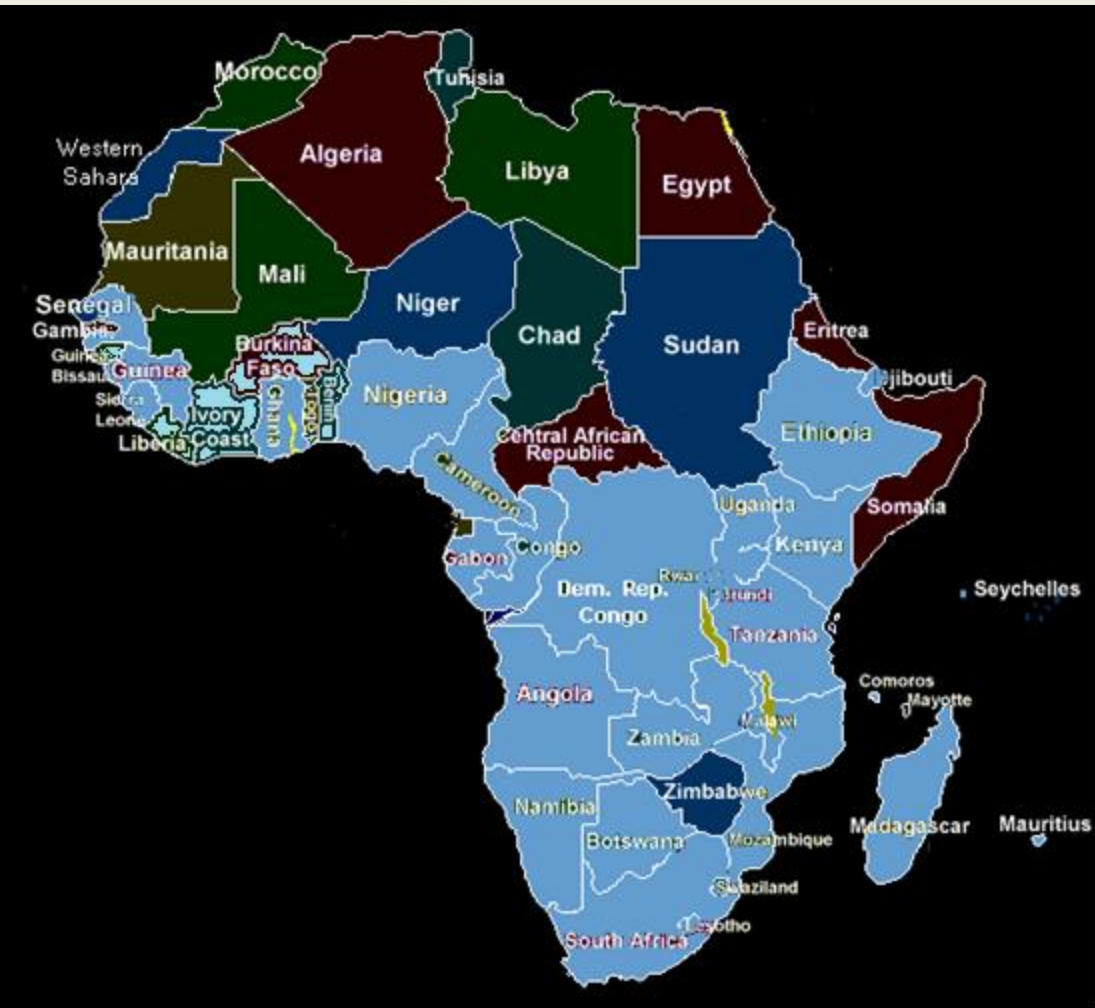
- Budapest - 1995
- Bangkok - 1998
- **Gaborone - 2000**
- Roswell, New Mexico - 2001
- San Salvador - 2005





The current ILEA facility opened in March 2003, and is co-located in Otse with the Botswana Police College. Since training began in late 2001, ILEA Gaborone has trained over **8000** participants from over **34** sub-Saharan African countries. We train **850** participants a year.

ILEA instructors are brought in from the U.S. and other sub-Saharan African countries and they come from over **20** different law enforcement agencies and other non-governmental organizations in order to ensure that participants gain a new perspective on combating crime in their home countries.



34 Participating countries:
 Angola, Benin, Botswana, Burkina Faso, Burundi, Cameroon, Comoros, Congo, Democratic Republic of Congo, Djibouti, Ethiopia, Gabon, Ghana, Guinea, Kenya, Lesotho, Liberia, Malawi, Madagascar, Mauritius, Mozambique, Namibia, Nigeria, Rwanda, Senegal, Seychelles, Sierra Leone, South Africa, Swaziland, Tanzania, The Gambia, Togo, Uganda and Zambia





International Law Enforcement Academy



"Empowering Those Who Serve"
ILEA Gaborone Team
U.S. Embassy



Francisco Berrios
Program Director



Craig Reistad
Deputy Program
Director



Baoki H Ditau
Training Coordinator



Glory Teko
Transport Officer



Theresa Mogatusi
Administrative
Assistant



Siamisang Mpoloka
Receptionist



Macdonald Qalinge
Finance Clerk



Moratiwa Setshwantsho
Training Assistant



Dinesh Chandra
Systems Manager



William Kaloobhai
Assistant
Systems Manager



Morris Mogotsi
Transport Officer



Bruce Phale
Multimedia
Specialist



Beaulah Makuwatsine
Finance & Administrative
Supervisor



Susan Segomelo
Administrative
Assistant



“Empowering Those Who Serve”

ILEA Gaborone Team Botswana Police Service



Maseng Mathiba
Deputy Managing
Director



K. Motlhanka
Managing Director



Keitseng Molobe
Finance Officer



G.G. Tawana
Transport Officer



Boile Matlapeng
Transport Officer



Biki Toteng
Transport Officer



Obed Matlhare
Transport Officer



Molefi Gosalamang
Transport Officer



Mmoni Chapo
Senior Personal
Secretary



Bronia Ditsele
Office Assistant



Eunice Phefo
Office Assistant



ILEA Campus

- Located on the Botswana Police College Campus
- Facilities:
 - Administrative Building
 - 2 Classroom Buildings
 - 3 classrooms (2 multilingual), computer lab, breakout rooms, instructor rooms
 - 4 Hostel Buildings
 - 120 dorm rooms
 - Common Area Building
- Wi-Fi Campus



ILEA Campus, Cont.

- Breakfast, Lunch and Dinner provided at the Botswana Police College Dining Facility
- Use of Police College Gym and Pool
- Medical Assistance provided by BPS
- Isolated Campus, but participants offered shopping trips to Gaborone on Wednesdays and Saturdays



How Courses are Developed

- Periodic Needs Assessments (2001, 2011)
- Courses and content are determined by the ILEA Steering Committee with input from ILEA Directors and participant feedback
- Course development and responsibility is assigned by ILEA Steering Committee to agency best suited to instruct course
- Participants provide feedback through course and instructor critiques



Leahy Vetting

No participant will be allowed to attend an ILEA course until/unless the individual and the individual's home unit have both been successfully vetted. For more information on “home unit” vetting, see State 12 39328.

ILEA participants must be vetted through a process consistent with Department policy and in compliance with the State Leahy Law. For more guidance on implementation of the Leahy Law, see the "2012 Leahy Vetting Guide", State 13 3371, State 11 23429 and State 03 34981.



International Law Enforcement Academy



International Law Enforcement Academy, Gaborone

Botswana



"Empowering Those Who Serve"



- About Us
- ILEA Staff
- Contact Us
- Training Schedule
- Participating Countries
- About Botswana
- Helpful Links
- Handbooks & Forms
- Former Staff

Take Our Training Survey Today



Latest News

2016 Second Quarter Newsletter

- Annual Report 2015
[download and read](#)
- ILEA newsletter first quarter 2016
[read more.....](#)
- ILEA Course Catalog
[read more.....](#)
- ILEA newsletter fourth quarter 2015
[read more.....](#)
- ILEA newsletter second quarter 2015
[read more.....](#)
- ILEA Annual Report 2014
[Learn more about ILEA.....](#)
- ILEA newsletter first quarter 2015
[Learn more about ILEA.....](#)
- LELD 9 - Graduates
[Find out more.....](#)

Share your



www.ileagaborone.com



ILEA Gaborone Quarterly



"Empowering Those Who Serve"

2nd Quarter

June 2016

End of tour for Deputy Program Director	2
ILEA Staff Retirements and Transfers	3
ILEA Gaborone Program and Deputy Program Director visit Ghana	
Staff Highlight	4
Airport Interdiction and Fraudulent Documents Training West Africa, Ghana	5
The ILEA experience	6
Skills I learned at ILEA	
ILEA Program Director meets with Commander of Ghana Police Service	7

Celebrating
15 Years
Of Excellence



Deputy Program Director Craig Reistad is recognized for his service to the ILEA upon completion of his tour.



Facebook

2,900 Members and Growing...

(2) Facebook - Windows Internet Explorer
 https://www.facebook.com/
 Search for people, places and things
 Ilea Home
 Ilea Gaborone
 News Feed
 Messages
 Events
 PAGES
 Livingstone College c...
 International Law Enf...
 Like Pages
 Pages Feed
 Create Ad
 INTERESTS
 FLETC
 Pages and Public Fig...
 APPS
 Games
 Photos
 On This Day
 Music
 Games Feed
 GROUPS
 Admin
 WHAT THE LAW...
 ILEA GROUPE FRE...
 Time out Seychelles
 Liberia Law Enfor...
 DRUGS FREE GHA...
 LEED 38 - ILEA G...
 LEED 42 Class, IL...
 Network of Caree...
 Directorate On Co...
 Update Status
 Add Photos/Video
 What's on your mind?
 Salim Soodagar commented on this.
 Salim Soodagar
 June 9 at 6:46pm
 I like this place. Very quiet and beautiful landscape
 Joshua Shawa and 3 others
 SPONSORED
 Invicta Watches
 amazon.com
 Featured Father's Day Men's Pro Diver Watches at \$59.99. Shop Now.
 Roofing Problems?
 reviews.angleslist.com
 Angie's List Helps You Get The Best Price For Your Roofing Project. Compare Roofers Now!
 Book your next round now!
 golfnow.com
 The golf course is calling. Your favorite courses at up to 80% off - Book Now!
 106,508 people like this
 Check Out Now and Save!
 swansonvitamins.com
 Hurry Back to Swanson Today & Automatically Get Free Shipping on Your Order of \$50+
 Western Union Now \$1 Fee!
 westernunion.com
 Send Money Across Town Or Around The World Starting At \$1 Fee Online.
 The Exp Group
 FREE ACCA online courses.
 Xtina Numèró likes Racheal Numero's photo.
 Lewis Mulei won against a person in Pool Live Tour.
 Simon Essissima commented on Valès Ngoulé's status.
 Peter Wetaaka commented on 91.2 CROOZE FM's status.
 Wale Sadiq likes Oluranti Sadiq's post on Iyanuoluwa Sadiq's Timeline.
 Othikimahamou... Mobile
 Chaze Sibolile Mobile
 Selma Naliyaluke... Web
 Steph Josephe K... Web
 Keemetswa Mos... Mobile
 Mzee Wa Busara
 Bruce Phale Phom... 2m
 Jean Marie Ngakoula 1d
 Aliou Wade Ba
 Seada Abdela
 Mable Shibata Sheba
 Regina Mintah
 https://www.facebook.com/todayinhistory/
 Documents
 Inbox - ReistadCR...
 ILEA Presentation ...
 Facebook - Wi...
 Internet | Protected Mode: On
 10:52 AM
 6/12/2014



QUESTIONS?