

Amboseli Ecosystem case on collaborative conservation and management support.

**Mr. Julius K. Cheptei &
Mr. Daniel Ole Sambu**

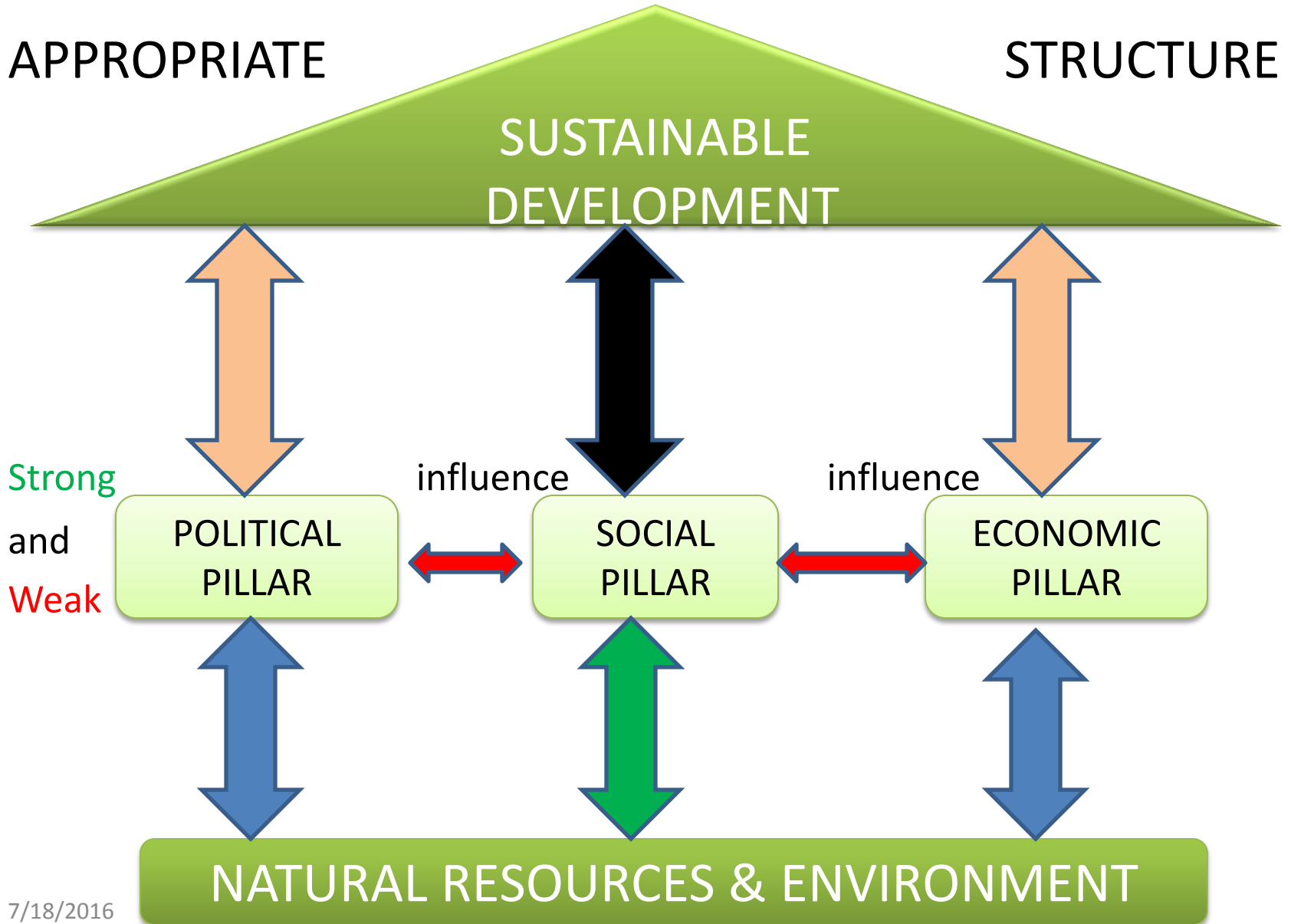


BIG LIFE

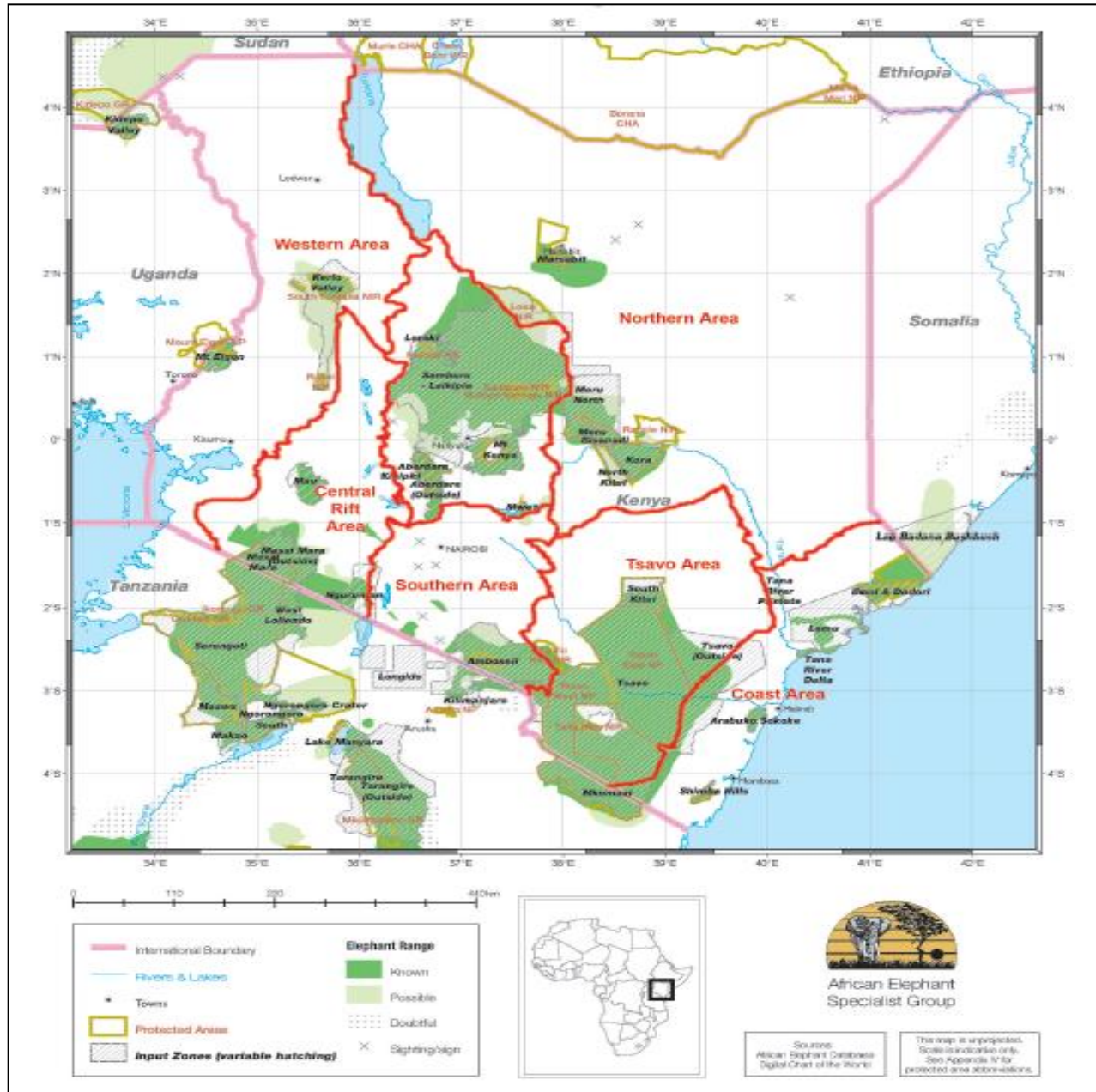
**KENYA
WILDLIFE
SERVICE**



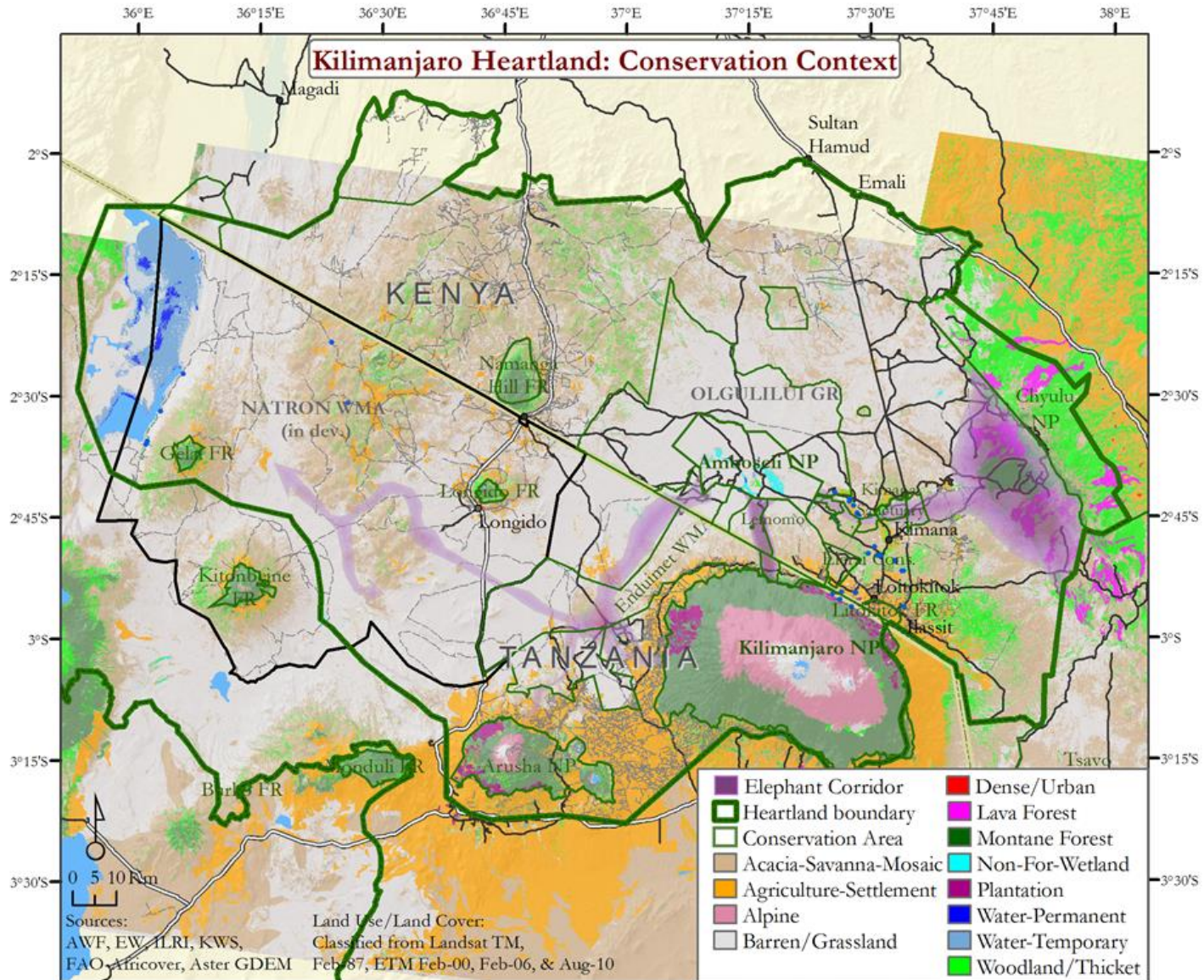
KENYA VISION 2030



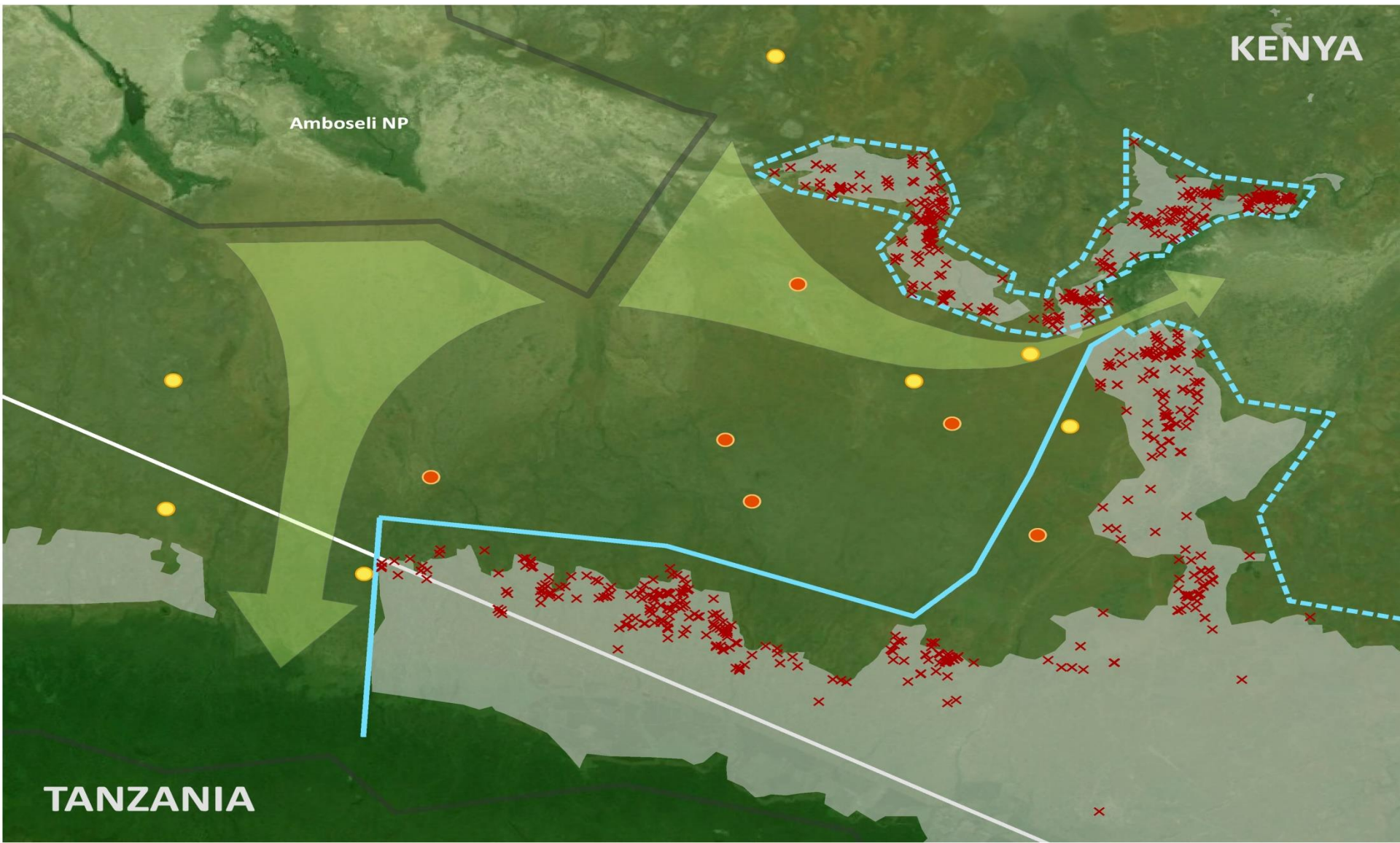
Trans boundary Network 'Conservation in EA



Kilimanjaro Landscape



HEC partnership project



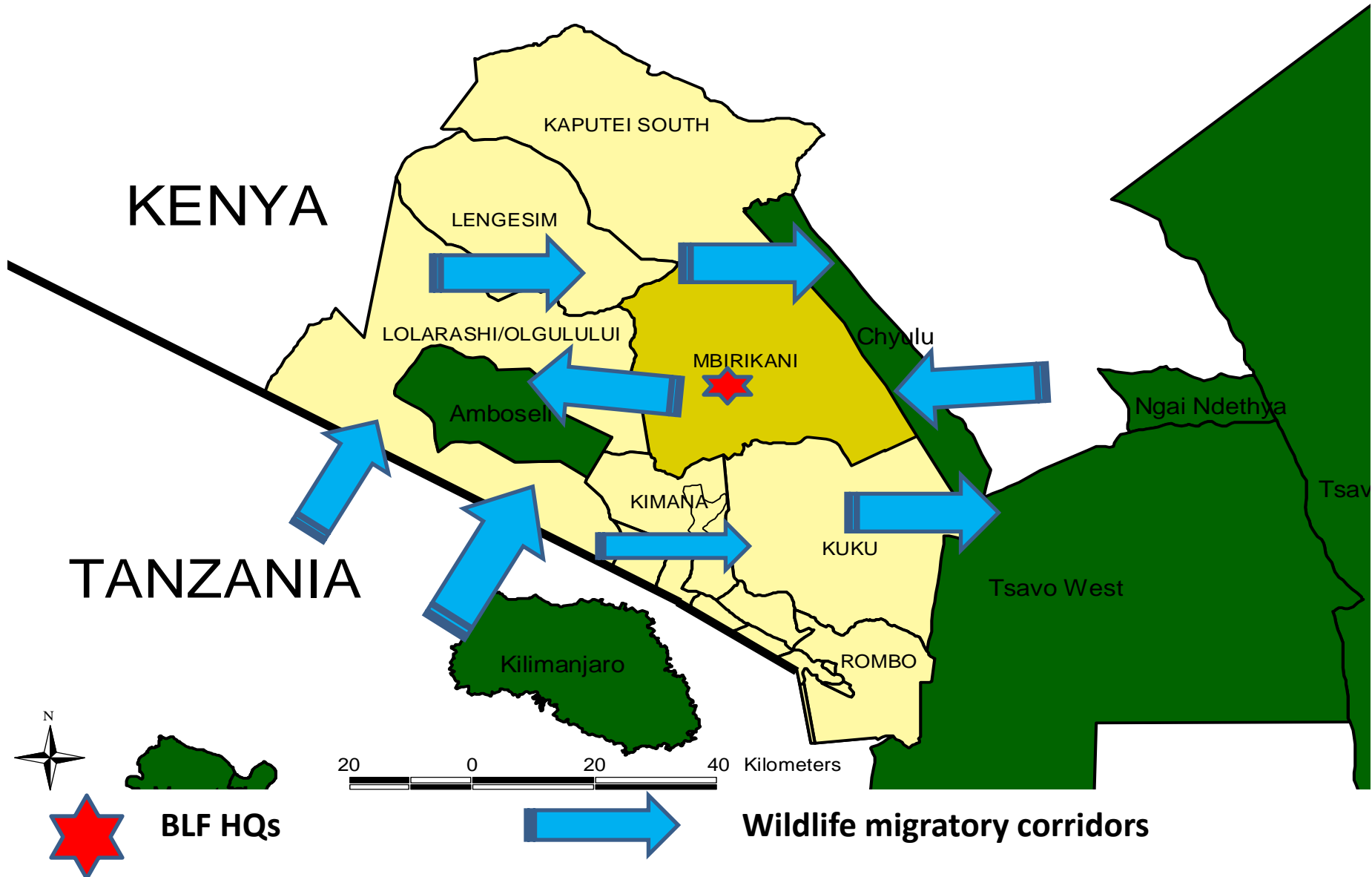


BIG LIFE
FOUNDATION

COMMUNITY-BASED
CONSERVATION IN
AMBOSELI-TSAVO
ECOSYSTEM

By: Daniel Sambu

Amboseli/tsavo ecosystem



POACHING



HUMAN WILDLIFE CONFLICT



HUMAN ENCROACHMENT

- Population pressure
- Uncontrolled settlement
- Unplanned development
- Lack of management plans
- Degraded landscape
- overgrazing

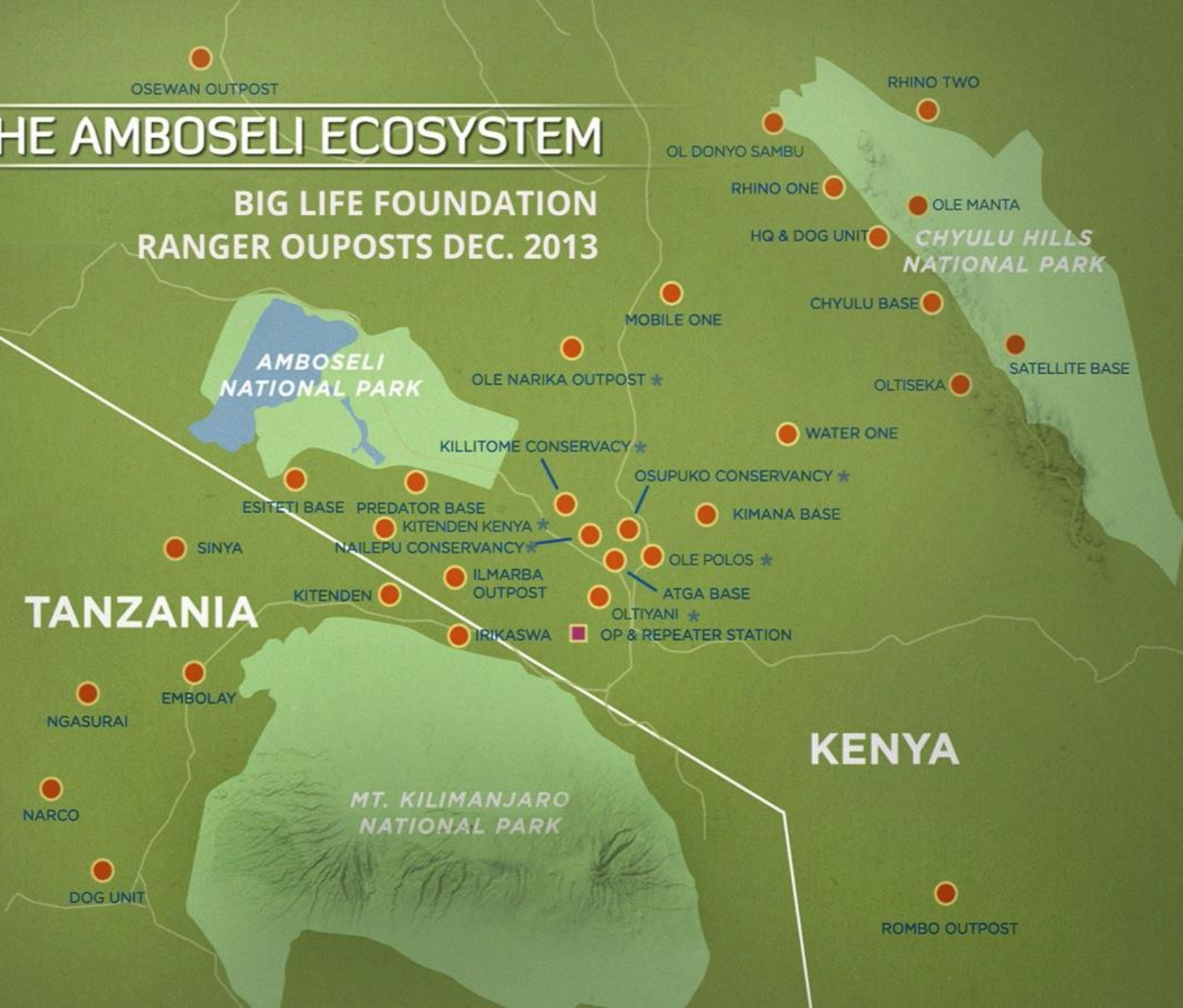


THE AMBOSELI ECOSYSTEM

BIG LIFE FOUNDATION
RANGER OUPOSTS DEC. 2013

TANZANIA

KENYA



Big Life Rangers



- **Big Life Employs.....**
- **371 rangers in Kenya/Tanzania**
- **32 Intelligence Informers**
- **37 rangers outpost-KE/TZ/ 7 Mobile unit including RDU**
- **They protect over 2 million acres of land in both Kenya and Tanzania**



Anti poaching ops.

Conflict mitigation

Rhino monitoring and protection



Livestock recovery

Data collection

Combating habitat destruction

Cross-border ops

PCF protects ALL predators, across an area of 670 000 acres, affecting 25 000 people



MAASAI OLYMPICS

THE HUNT FOR MEDALS, NOT LIONS



Wildlife scholarship-education



- 156 students under wildlife scholarship
- 28 teachers employed in local schools
- 17 schools supported

Donors and partners



BIG LIFE
FOUNDATION



Ann &
Robert H. Lurie
Foundation

Thank you



www.biglife.org